

Historic, archived document

Do not assume content reflects current scientific knowledge, policies, or practices.

62.71

22



PROSPECTOR

IRIS
for
1950

Coolley's
GARDENS
SILVERTON - OREGON



COLOR in the garden at Iris time. A peek into the little garden of Doctor Kleinsorge, noted Iris breeder.



ON PARADE - more than 300 varieties at top bloom in our display garden



6271
Hello again!

Yes, it's Iris time once more. For 22 years we have been greeting old customers and friends and welcoming new ones, from Maine to California, Canada to the Rio Grande. This catalog is our hearty handshake to renew old acquaintance, and to hope for many a new one.

Iris-

THE PERENNIAL SUPREME

For garden color galore, for cutting, for exhibition, for a hobby . . . the one garden plant that succeeds in hot climates and in cold ones as well. Easy to grow, in most any soil, and at a price to suit the beginner with a modest purse or the connoisseur with unlimited means. Once planted they will grow and increase naturally in your garden, the clumps becoming bigger and more gorgeous each blooming season.



El Paso

TIME OF SHIPMENT, WHEN TO PLANT, TERMS, ETC.

IRIS will be shipped beginning July 1st and continue through the summer and early fall. Earliest shipments will go to those who simply MUST have the plants early, but it is obviously impossible for us to deliver thousands of orders at the outset. During July and August we will ship constantly in the sequence as received. Your success is assured if planted any time during this period, but early ordering is advisable to avoid stock being sold short.

TRANSPORTATION is by prepaid parcel post or express, whichever we deem most expedient. Be sure to state your express office if different from postal address.

TERMS are cash with the order, either check, draft or money order. We do not advise the enclosure of currency with your order. No C.O.D. shipments—this adds to cost and involves red tape for you and for us.

WE GUARANTEE all plants to be true to name, top quality and size, free from insect pests and disease, and to reach you in a live and healthy condition. If for any reason you are not completely satisfied, please notify us promptly.

TO CUSTOMERS IN CANADA: We ship many orders to Canada every year. There is a simple procedure which all Canadians must follow, however, in order to import Iris or other plant material. Make out the list of items wanted, state name and address of firm you are ordering from and send it to the Plant Import Division of your Department of Agriculture at Ottawa. They in turn will send you a permit number and labels. Then you send your order, including the permit label, to us in the usual way.

**NO SHIPMENTS MADE DURING SPRING MONTHS
FALL SHIPPING SEASON CLOSES IN LATE OCTOBER**



NEW PINK IRISES FOR YOUR GARDEN

TYPICAL FLOWERS
SELECTED FROM UNNAMED SEEDLINGS
IN THE HALL COLLECTION.

*Here is the
newest thing in Iris—*

**DAVE HALL'S
FLAMINGO PINKS!**

In all Irisdom there has been no garden—no hybridizer—gaining as much attention these past three or four years as has David Hall and his Pink Irises in Wilmette, Illinois. In England as well as in America he is recognized as the leading breeder of pinks. He has an enviable reputation for putting out superior things in other colors also. In 1949 he was awarded the Foster Memorial Plaque, an honor conferred by the Iris Society of England for outstanding achievement in horticulture.

Last summer Mr. Hall decided to retire from the commercial end of the Iris game. Arrangements were made whereby his entire stock of named varieties, numbered seedlings—even the selected seedlings flowering for the first time last June—were acquired by Cooley's Gardens and moved to Oregon. We take great pride in offering these magnificent and distinct creations in this catalog.

NEW FOR 1950

(all from David Hall)

DOLLY VARDEN

A very large light pink with a slight overlay of salmon. The largest pink of the flamingo series yet named from the Hall collection. It is a self with no haft markings, good form and extra heavy substance and it takes the sun surprisingly well. Flowers are carried on sturdy well branched stems, 38 inches tall. Has proven a good parent for large pinks. Dolly Varden has probably attracted as much attention as any Iris shown in the Hall garden. (Seedling No. 46-60.)

Each \$20.00

HEATHER ROSE

This is a large rosy orchid-pink, but of a different shade from any Iris we have seen. The color is new, pleasing and very close to that of Scotch heather. Form, stem and branching are all good. It is a vigorous grower, hardy and blooms freely. A fine Iris in every way and brings a bit of new color to the garden. Courtier is one parent. (Seedling No. 46-11.)

Each \$15.00

HI-TIME

A lustrous golden apricot color, called by some a peach-pink although not actually a pink at all. It has a full deep tangerine beard and is a self with no haft markings. The medium large flowers of heavy silky texture have fine form and are carried on 34-inch well branched strong stems. Hi-Time has very dark blue green foliage that is unusually resistant to leaf spot; a vigorous grower and free bloomer. A plant of this Iris was sent to Harry Randall of England in 1947. It was selected for the Wisley Trial Gardens and a picture of it appears in the 1948 year book of the English Iris Society. The Royal Horticultural Society featured it in color in the November, 1948, issue of its Journal. (Seedling No. 46-10.)

Each \$20.00

SUNRAY

A large ruffled light yellow of quite ideal form and extra heavy substance. One parent is the pink Floradora. These pinks give a sheen and brilliance to their offspring rarely found in yellows. The 36-inch stem and branching is excellent. It is a fast increaser, hardy and an outstanding parent for ruffled pinks and yellows. A well grown stem of Sunray is well nigh the perfect Iris. (Seedling No. 46-52.)

Each \$15.00

**SPECIAL OFFER OF SELECTED HALL FLAMINGO
PINK SEEDLINGS @ \$5⁰⁰ EACH, 6 FOR \$25⁰⁰**

Out of the thousands of seedlings raised only a limited few are named for introduction. Ordinarily the rest are doomed to discard. But the quality of many of these was so outstanding, and the desire of gardeners who coveted them was so great that we decided to make the best of them available to our customers.

They range in color from pale to deep pink, some on the orchid side and some with a raspberry tinge. Practically all have the fiery tangerine beards. They will make very attractive garden clumps and are valuable for amateurs who would like

to try a hand at raising some pink seedlings of their own.

These are not just "field run" seedlings! Every one was hand picked from thousands last June while in the height of bloom, and they were the cream of the crop. We cannot guarantee any special shade or depth of color but every one will be different and if you order 6 for \$25.00 no two will be alike.

We do have the "golden apricots" grown separately and thus can provide this particular color if desired. You will be delighted with any of them!



Thotmes III

ALLINE ROGERS

The form of this flower resembles Cascade Splendor, one of its parents, but the color inclines more to pink or rose, with just a suggestion of ashes of roses in its cast. There is considerable gold in the blending of color, especially near the haft. Style arms and beard are both golden yellow. Falls are wide and quite flat, standards upright and closed, the entire flower heavily ruffled. 34 inches tall. Having been admired by the wife of the President of the American Iris Society at the annual meeting in 1949 this Iris was named in her honor. (Seedling No. 373-A.) **Each \$15.00**

PROSPECTOR

Shown on the cover. Deepest golden yellow . . . almost an orange . . . with the falls carrying a bold patch of clean ivory-white. For combined depth of color and brilliance at the same time PROSPECTOR has no equal amongst the yellows. The amply large flowers are produced abundantly; they are well formed with widely flaring falls and closed standards. Height about 34 to 36 inches. Of the many first rate yellow Iris available these days there are none quite like this one. (Seedling No. 242-A.) **Each \$15.00**

THOTMES III

Eight years ago we introduced Tobacco Road. Since then the Kleinsorge "browns" have become known and grown the world over . . . deep browns, pale tans, sultry blends in many hues. This newest one is medium light in tone, a smooth self of glistening golden tan with a light bronze beard. It is a gigantic Iris with extra broad falls and heavy texture. 40 inches tall. The name? Well, in ancient times an Egyptian Pharaoh named THOTMES III sent an expedition into Syria to collect plants for his homeland. His men brought back, among other things, rhizomes of the Iris and to this day the inscriptions and carvings on his temple walls record this interesting bit of Iris history. Here is an Iris worthy to be named for this pioneer Iris collector! (Seedling No. 382-A.)

Each \$20.00

*The famous
Kleinsorge
introductions*

NEW FOR 1950

Be among the first to grow them!

The World's Finest Irises



ACTION FRONT (*Cook, 1942*) Each \$1.00
A huge flower of glowing deep coppery red, with extra broad falls and solidly colored haft. Beard is brilliant yellow. A grand grower, with strong stalks and heavy foliage. Height 3 feet.

ADMIRAL NIMITZ (*Graves, 1948*) Each \$8.00
A spectacular new white from a famous introducer. The crisp, firm flowers, with closely domed standards and semi-flaring falls are large and very white, surmounted by a thick brilliant gold beard. This combination suggests a naval officer in white with rich gold shoulder ornaments. Fine spacing of flowers, a husky grower, 36 to 42 inches in height. HM AIS, 1948.

ALASTOR (*Spender, 1940*) Each 60c; 3 for \$1.50
One of the very few exceptional Irises originated in England just prior to the outbreak of the war. This is a beautiful flower in deep pink tones, vivid and alive, with golden center and a golden hazel-brown haft. AM AIS, 1941.

ALONA (*DeForest, 1945*) Each \$1.50
A soft pink blend, heavily ruffled, with horizontal falls, in the color range of China Maid. The stalk is well branched, about three feet in height. Foliage has a deep purple cast.

ALPINE GLOW (*Kleinsorge, 1945*) Each \$2.00
Large flower of subdued rose tones, bordering on lilac or pale violet. It has a slaty overcast, suggesting the soft colors of mountain valleys at sundown. The beard is gold and there is some brown shading on the haft. A sturdy and well branched stalk 40 inches tall holds the self-colored blossoms well aloft. Petals are crimped like an Oriental Poppy. HM AIS, 1946.

AMBER GEM (*Salbach, 1946*) Each \$5.00
Blended shades of bright chestnut and gold, an extra large and full flower with great color appeal. Standards are rich golden brown shading to gold at the base. Golden style arms. Large, broad falls of bright chestnut-brown with prominent veining of deeper brown. Blooms are beautifully poised on well branched 36-inch stems. Very distinct. HM AIS, 1947.

AMIGO (*Williamson, 1934*) Each 50c; 3 for \$1.25
This richly colored Iris suggests purple Pansies, with its velvety texture and sharp contrasting shades of blue and violet. It is one of the most popular varieties of all time and in 1945 was given a special award by the English Iris Society. Standards are clear light violet-blue; falls intense violet-purple edged the color of the standards. 34 inches tall, a fine grower and good reliable bloomer. HM AIS, 1936; AM, 1938. Turn to page 34.

ANGELUS (*Egelberg, 1937*) Each 50c; 3 for \$1.25
In color a bright light pink, with slight lavender iridescence just below the lemon beard. Throughout the center there is a delicate infusion of lemon-yellow. Large, husky stems, 3 feet tall. Very late. HM AIS, 1942.

ANITRA (*H. Sass, 1936*) Each 40c; 3 for \$1.00
A silvery sky-blue, pure in color, of great size and beautiful form. Particularly effective and strikingly blue in late afternoon and early evening. Midseason; average height. See page 34.

ANNA WILLIAMSON (*Cook, 1946*) Each \$3.00
A lovely bright bicolor pink, the standards lighter than the falls. The pink tone is on the rosy side, with an underlying yellow suffusion. Large flower, broad petals and ideal form, 3 feet tall. HM AIS, 1946.

ARAB CHIEF (*Whiting, 1944*) Each \$2.00
An Iris of rich and brilliant coloring—very near to burnt orange in effect. It is a pure self of intense color value, of large size, pleasing form and has exceptionally vigorous growing and blooming habits. HM AIS, 1946.

ARCTIC (*Kleinsorge, 1940*) Each 50c; 3 for \$1.25
Here is one of the most beautiful and best Iris originated by this famous raiser of notable seedlings. A huge white and gold flower of perfect form, with ruffled but closed standards and broad falls that are as smooth as white enamel. There is an area of bright yellow throughout the center of the flower and the standards have a creamy tint. Established plants will produce spikes 4 feet and over in height, with as many as six open foamy flowers at one time. HM AIS, 1941; AM, 1942. See page 32.

ARGUS PHEASANT (*DeForest, 1948*) Each \$18.00
A smooth soft brown self which has become justly famous in the short space of two seasons only. It thrilled visitors at American Iris Society conventions in both Nashville and Portland, and ranks with Pretty Quadroon as the two finest and most beautiful light brown Irises of the day. Huge flowers with broad flaring falls and wide standards; orange-brown beard. 38 inches tall. HM AIS, 1948.

AUBURN (*Kleinsorge, 1945*) Each \$7.50
This is certainly a new color in Iris—at least we have never seen anything like it. The name Auburn was selected because it seems especially suited to the flower. Both standards and falls are a coppery henna-brown, with an undertone of gold, and the falls have a brilliant patch of blue in the center at the tip of the beard. This is a remarkably vivid Iris which glows when seen a block distant. Very early, with 36-inch stems. HM AIS, 1946.



BLUE IRIS

To reflect the sky . . . to provide the perfect complement for the yellows, whites, pinks . . . a garden is lost without blue! And what a list nowadays . . . Great Lakes, of course, and Sierra Blue, Gloriole and Missouri among the older ones. And exciting new ones like Pierre Menard, Blue Valley, Distance and Chivalry . . . and Helen McGregor—naturally!

Helen McGregor

DYKES MEDAL, 1949

AZURE SKIES (*Pattison, 1943*)

Each \$1.25

Originally called "Summer Skies" by Mrs. Pattison, the originator, this is a self of pale azure-blue with firm domed standards and flaring, almost horizontal falls. The flowers are beautifully ruffled and have wide hafts, surmounted by a white beard. Declared by many to be the most lovely of all light blue Iris to date. 36 inches. AM AIS, 1945. See page 11.

BAGDAD (*Whiting, 1946*)

Each \$6.00

A deep, strong yellow, overlaid with a metallic finish of burnished brass. Of pleasingly flaring form, very heavy in substance. This is a strong grower, nicely branched, hardy and increases rapidly. A real "brass-yellow."

BALLET DANCER (*Kleinsorge, 1949*)

Each \$12.00

Resembling the swirling skirt in a "pirouette" this distinctive apricot-tan is another Cascade Splendor seedling and a sister of Minuet. Standards are large, full and closed. The falls are almost horizontal, very broad, waved and crimped at the rim. Form is only one special attribute . . . the coloring is delightful—a buffy golden apricot self which carries well. 38 inches, large and well branched. HM AIS, 1949.

BALMUNG (*H. Sass, 1939*)

Each 75c; 3 for \$2.00

Just about the finest, in our opinion, of all the Sass series of yellow Plicatas. The ground color is a definite yellow and the markings are peppered on in cinnamon-brown. Note the illustration—it is a perfect likeness. Much larger than others of this series, with tall stems and good habit. HM AIS, 1940; AM, 1942. Shown on page 28.

*Cherie***BANDMASTER** (*Hall, 1944*)

Each \$2.00

A very large, vigorous growing and free blooming medium blue, a few shades lighter than The Admiral and deeper than Great Lakes. The color holds up unusually well. Immense foliage and heavy stems 36 to 40 inches tall. HM AIS, 1944.

BERKELEY GOLD (*Salbach, 1942*) Each \$1.00; 3 for \$2.50

This fine yellow continues to hold a place near the top in the list of 100 best Iris. Absolutely perfect in form, on stems that average 3 feet and over, well branched and with flowers of very rich solid yellow, it is regarded by many judges as the world's best yellow Iris. HM AIS, 1944; AM 1946.

BERMUDA SAND (*Hall, 1939*) Each \$1.00; 3 for \$2.50

A glorified and gigantic Jean Cayeux, both standards and falls heavily ruffled. Deeper in color than Jean Cayeux, a light coffee-tan with a glint of gold. Freshly opened blooms are reddish gold. Strong growing with broad foliage and sturdy bloom stalks.

BLACK BANNER (*Nicholls, 1947*)

Each \$2.50

Velvety, intensely colored near black. Sleek and rich in its midnight hue, with practically solid dark hafts. Increases very rapidly and grows well everywhere. Height 3 ft. HM AIS, 1947.

BLACK FOREST (*Schreiner, 1945*)

Each \$3.50

"Black as pitch" says the introducer. A rich, silky, ebony-blue-black, the effect of which is intensified by a very solid haft and a blackish blue beard. Medium in height, with flaring falls. A very startling new introduction. HM AIS, 1946; AM, 1948.

BLACK RUBY (*Dolman, 1949*)

Each \$7.50

An almost black-red, extra smooth and glossy. It is very early, being one of the first of the tall bearded Iris to open. Hafts are clean and devoid of markings, the bronze-gold beard seemingly placed on a solid piece of velvety crimson-black. Branching is good and the stems are about 34 to 36 inches in height. Increases rapidly and soon forms a fine clump. HC AIS, 1946; HM, 1949.

BLUE FRILLS (*Stephenson, 1946*)

Each \$3.00

Pure azure blue, darker than Great Lakes but still a light blue Iris. Clear and uniform in color, the flowers rounded in style, and of a rich glossy texture. The blue tinged beard adds to the color note. 34 inches.





Auburn

BLUE GLOW (*Nicholls, 1945*) **Each \$3.50**
 Very rich deep blue, the exceptionally wide falls having a lacquered appearance. Standards are a shade lighter than the falls, broad and full, crisp and brilliant. The haft is solid brown with a long white beard shading into orange within the flower. The very best Iris of this color. Big, bold and 3 feet tall. HM AIS, 1948.

BLUE RHYTHM (*Whiting, 1945*) **Each \$4.00**
 Very large flowers of Cornflower-blue, softened by a silvery overtone. The large standards are arched and domed, the broad falls are semi-flaring with smoothly colored hafts. Growing from 3 to 4 feet in height, perfectly branched, we consider it just about tops as a blue Iris. HM AIS, 1945; AM, 1947.

BLUE SHIMMER (*J Sass, 1942*) **Each \$1.50; 3 for \$4.00**
 An entirely different Plicata. Clean, sparkling white with an all-over pattern of clear blue stippling. The blue seems to be peppered on the white background in an even manner, rather than in the familiar buttonhole-stitch style. The flowers are extremely large and full. Certainly one of the most outstanding Irises of the past few seasons. HM AIS, 1942; AM, 1944. See page 38.

BLUE VALLEY (*K. Smith, 1947*) **Each \$10.00**
 This new Iris, a seedling of Lake George crossed with Great Lakes, has been the subject of much praise and comment. Very near to true blue, ruffled and large in size, it possesses an unusual sparkling sheen. Few plants. HM AIS, 1947; AM, 1949.

BRIGHT LIGHTS (*Schreiner, 1946*) **Each \$3.00**
 Actually a yellow Plicata along the lines of Tiffanja, but with less of the Plicata pattern and a more yellow and white contrast. The falls carry a central patch or "blaze" of almost pure white. The stitchings are soft brown. A very colorful clump. Shown below.

BRILLIANT AMBER (*Salbach, 1947*) **Each \$5.00**
 Deep amber standards with slight pinkish cast. Big, semi-flaring falls of bright golden brown with deeper gold veining. The beard is deep yellow. A strong growing variety, well branched, distinct and bright in tone. 40 inches tall. HM AIS, 1947.



Chamois



*Bright
Lights*

BRYCE CANYON (*Kleinsorge, 1944*) Each \$3.50

A distinct and warm shade of henna-copper, self colored and so named because of the similar colors found in the rock formations of one of America's most famous tourist attractions. It has especially broad hafts, large, rounded falls, and finely held standards. The picture on page 12 is an excellent likeness. Bryce Canyon achieved instant popularity. Awarded IIM AIS in 1945; AM in 1947, and is in sixth position in this year's list of 100 most popular Iris. A good grower everywhere, hardy, 3 feet and over in height.

BUFFAWN (*Andrews, 1940*) Each 50c

If you are looking for an Iris of unusual coloring and with the most brilliant tangerine beard, this is it. A soft pinkish buff self, hard to describe, set off with a very red-orange beard. Nicely shaped, prolific bloomer and attracts wide attention.

BURGUNDY ROSE (*Hull, 1946*) Each \$3.00

Ruffled dark rosy amethyst, a very strong and bright splash of color in the garden. The falls carry rather prominent veins of darker tone. A self, borne on heavy, well-branched stalks just slightly under 3 feet in height.

CALIFORNIA GOLD (*Mitch., 1933*) Each 35c; 3 for 90c

By all odds the best value in a yellow Iris at anywhere near the price. It is an easy grower and free bloomer, a deep glittering yellow of very large size and surpasses everything in its color except the recent novelties. See page 34.

CAMEROUN (*Cayeux, 1938*) Each \$1.00

A but little known French Iris of velvety blackish hue, one of the best we have ever grown. The blooms are huge, almost black, with a beautiful sheen and very broad falls. Our stock is limited.

CAMPFIRE GLOW (*Whiting, 1947*) Each \$15.00

Glowing ruby self, heavily overlaid with bright copper which gives it a metallic sheen. A genuine self with no haft markings—even the beard is deep copper-red. Wide and full form but the flowers are of medium size. Substance is firm and the blooming season very long. Height 30 to 36 inches. A very rare color gem. HM AIS, 1947.

CAPTAIN WELLS (*Cook, 1941*) Each \$1.00

Deep glossy maroon-purple; a large, rich, solidly colored self, neat and finished in appearance. There are no haft markings, and beard is a subdued bronze-yellow. Possesses a wonderful "shine" or gloss that gives it life despite its unusual darkness. HM AIS, 1942; AM, 1943.



Azure Skies

CASA MORENA (*DeForest, 1943*) Each \$2.00; 3 for \$5.00

Large flowers—yes, extra large—of deep, glistening, rich brown. Same solid color on standards and falls. Styles yellowish; beard brownish orange. Not just a novelty, but a flower that adds an entirely new, rich note to the garden picture. See the accurate picture on page 15—the picture, of course, is much reduced in size. Height 38 inches. HM AIS, 1944; AM, 1946.

CASCADE SPLENDOR (*Kleinsorge, 1945*) Each \$3.50

Very large ruffled pink, tan and apricot blend, with extra heavy stalk 40 inches tall and bearing up to ten flowers. The ruffling is more pronounced than in any Iris we have ever introduced and is most unusual in so large an Iris. It blooms quite late. HM AIS, 1945; AM, 1947. See back cover for an excellent kodachrome of this flower.

CHAMOIS (*Kleinsorge, 1944*) Each \$5.00

One of the largest Irises we have ever introduced, beautifully formed, both standards and falls waved at the edges. It is pure chamois in color, standards and falls identical, the beard yellow, tipped bronze. There are no veinings or markings of any kind; the petals have a soft, satiny finish and glisten with myriad frosty particles. We are certain that you will find this Iris different from any other you have ever seen. HM AIS, 1945; AM, 1948. Shown in color on page 10.



Davbreak



Bryce Canyon

CHANTILLY (Hall, 1945)

Each \$3.50

A ruffled orchid-pink. The edges of both standards and falls are so heavily ruffled and frilled that they have the appearance of being edged with lace of a lighter shade than the rest of the flower. From the same line of breeding as the famous Flamingo Pinks. 36-inch stems, strong and well branched. HM AIS, 1945; AM, 1947. Shown on page 14.

CHERIE (Hall, 1947)

Each \$18.00

Most famous of all the new Hall "flamingo pinks." A large, ruffled, full bodied pink self of excellent form and substance with a deep tangerine beard. The 34-inch stems are stout and well branched; growth is vigorous and increase above average. Well illustrated on page 9. HM AIS, 1947; AM, 1949.

CHINA MAID (Milliken, 1936)

Each 75c; 3 for \$2.00

Gigantic pink blend, with copper and gold tones smoothly blended into a harmonious whole. The effect is a luscious pink. A rampant grower, producing stalks that reach 4 feet, with a myriad of delightfully formed big flowers. HM AIS, 1938; AM, 1939.

CHIVALRY (Wills, 1944)

Each \$7.50

This outstanding big blue won the Dykes Medal in 1947. Of smooth medium blue color, large in size and quite ruffled, a sturdy growing Iris with every good point. It is one of the most sought after varieties of the day. Stock limited.

CHRISTABEL (Lapham, 1936)

Each 50c

Continues to hold its own with the newest red introductions. It is brilliant and very red in effect, glorious as a garden clump. Almost a self, smoothly finished, large in size and about 3 feet in height. HM AIS, 1936; AM, 1938.

CITY OF LINCOLN (H. Sass, 1936)

Each 50c; 3 for \$1.25

Brightest, largest, and surely the finest of all true Variegatas. Clear golden yellow standards, broad, fiery red falls, startling in their contrast. When well grown on an established plant it is unbeatable. HM AIS, 1937; AM, 1939. See page 35.

CLOTH OF GOLD (Whiting, 1945)

Each \$2.00

To say that this is another excellent deep yellow would attract scant interest. But last spring we saw a great many wonderful seedlings and new named varieties in Mrs. Whiting's Iowa garden. One of the best displays in the planting was a group of Cloth of Gold—deep in color, perfectly formed, tall and stately. We highly recommend it as one of the very finest yellows. HM AIS, 1947.

CLOUD CASTLE (Graves, 1944)

Each \$3.00

Exquisite Wistaria-blue with mauve undertone, a very large and majestic Iris. The falls are slightly waved and ruffled, broad and widely flaring. A fit companion to Azure Skies, taller and more on the mauve side than blue. HM AIS, 1944.

COPPER LUSTRE (Kirk, 1934)

Each 50c; 3 for \$1.25

Entirely different from all others, its great popularity has resulted not only from the odd and beautiful copper tone of its flowers, but also from the fact that it performs well in all sections of the country. It positively glows in its bright copper, gold, and pinkish tan blendings. Dykes Medal, 1938.

COPPER RIVER (DeForest, 1945)

Each \$4.00

Glistening tan; falls overlaid bright new penny copper. The ruffled flaring form of this new Iris, coupled with its brilliant sheen, makes it most attractive. 36 inches, well branched.

COPPER ROSE (Cook, 1941)

Each \$1.00

A smooth blending of old rose, tan and copper, brightened by a glow of golden yellow at the center. Standards between buff-pink and Japan-rose; falls between terra cotta and ochre-red. Coloring is rich and bright, the flowers medium to large in size, with very wide standards and falls. HM AIS, 1942; AM, 1943.

CORDOVAN (Kleinsorge, 1946)

Each \$2.50

A seedling of Bryce Canyon. The coloring is close to that of cordovan leather—a deep coppery oxblood tone, very rich and glossy. Standards are coppery rose-red, the hafts are finely netted with minute webbing and the falls have a distinct frill or ruffle. HM AIS, 1947.

CORNFLOWER (Whiting, 1948)

Each \$3.00

Not a large Iris as new ones go, but noted for the blueness of the classically formed flowers. Darker than Great Lakes, one of its parents, with good branching and vigorous growth. 36 inches.

COURTIER (Hall, 1947)

Each \$6.00

Deepest in color of the flamingo pinks. It is not as large nor has it as good form as Cherie, but the color is outstanding. The 30-inch stems are strong and the branching is good. The vivid, deep tangerine beard is very prominent and adds a fiery note. All of these new pinks are winter hardy and set seed freely.

- DAMERINE** (*Gage, 1939*) Each 50c; 3 for \$1.25
This fine red, not so well known, is a real surprise in this color group. A large flower of deep red, the standards domed and the falls flaring. Near the shade of Christabel, very velvety and uniform in color. Bronze Medal at the New York World's Fair in 1940.
- DAYBREAK** (*Kleinsorge, 1941*) Each \$1.25
Huge golden pink, with slight undertone of copper. The flowers are well shaped, with closed standards and falls that are semi-flaring, but there is a suggestion of ruffling in the entire blossom. The name is most appropriate. Daybreak has a proud record: HM AIS, 1942; AM, 1943; runner-up for Dykes Medal in 1945; TIED FOR DYKES MEDAL IN 1946. Shown on page 11.
- DEEP VELVET** (*Salbach 1939*) Each 75c
A striking introduction, one of the richest and best dark Irises we have yet seen. Self colored in very dark, yet bright, blackish red-purple, with perfectly formed blossoms of very large size. Brownish suffusion at the haft, with deep bronze beard. HM AIS, 1941; AM, 1942.
- DESERT SONG** (*Fay, 1946*) Each \$7.50
New cream self, beautifully ruffled and with extra large flowers of excellent proportion. Texture is especially heavy and the flowers last a long time in either rain or heat. Stems reach a height of 3½ feet. HM AIS, 1946; AM, 1949.
- DESTINY** (*Burgess, 1934*) Each 40c; 3 for \$1.00
A great heavy flower of deepest blackish bronze-purple, the beard rich golden bronze. From New Zealand, and credit is due the originator for having made it possible for American gardens to enjoy such an outstanding Iris. It has all good points—excellent form, tall stems, and succeeds everywhere.
- DISPLAY** (*Grant, 1942*) Each \$1.00
One of the darkest and richest reds we have ever bloomed in our garden. Almost black in certain lights, it glows with a hidden fire in others. Described as Spanish red, shading to deep maroon, it has but little of the purple influence in it. No veining at the haft; yellow beard flecked brown. About 3 feet tall. HM AIS, 1942.
- DISTANCE** (*Cook, 1946*) Each \$7.00
Silvery light blue, smooth in finish and very evenly colored. There is no coarse veining in the flower and almost no markings at the haft. The white beard is quite inconspicuous. Selected from hundreds of blue seedlings by the originator of such things as Sable, Dreamcastle, Pink Reflection and Capt. Wells. HM AIS, 1946; AM, 1949.
- DOGROSE** (*Insole, 1930*) Each 50c; 3 for \$1.25
Deep rose-pink self, on very tall, wiry stems. We originally imported this Iris from England several years ago and have constantly had difficulty in keeping enough stock to offer. A very free bloomer, it is of medium size but makes a most colorful and effective pink garden clump and is a beautiful cut flower in the house.
- DREAMCASTLE** (*Cook, 1943*) Each \$5.00
An orchid-pink self, the segments very broad and of bright clear tones. The white beard, tinted lemon at the base, tends to emphasize the solid pink effect. One of the most sought after varieties and stock is very scarce. See page 41. AM AIS, 1948.
- EBONY ISLE** (*DeForest, 1949*) Each \$18.00
Rich, smooth, well formed flowers of deepest purple, in some lights a red-black. There are no markings of any kind to mar the sleek even richness of the heavy falls. The very dark thickly set beards are tipped burnt orange. In spite of its darkness it glows with color. 33 to 36 inches, late.
- E. B. WILLIAMSON** (*Cook, 1937*) Each 40c; 3 for \$1.00
Glowing coppery red blend; it stands in a special niche all its own, because it is neither red nor copper. Large flowers of silky texture, fragrant, on 3-foot stems. HM AIS, 1938; AM, 1939.
- EDWARD LAPHAM** (*Lapham, 1942*) Each \$2.00
A very fine new red by the man who produced Red Gleam. The coloring is rich and glossy, deep but bright maroon-red; the blooms trimly tailored with no haft venation and a brownish touch near the center. Bronze-gold beard. Height about 3 feet.
- ELLA CALLIS** (*H. Sass, 1942*) Each \$1.50
For sheer brilliance here is an Iris that will constantly catch the eye of every visitor. It is a huge deep yellow with the falls flushed orange. The striking feature about it, however, is the infusion of orange-red on the falls, sort of brushed on, particularly about the center. It is not a Plicata and can hardly be called a blend. One of the most distinct of all Sass Irises.
- ELMOHR** (*Loomis, 1942*) Each \$1.00; 3 for \$2.50
Winner of the Dykes Medal in 1945, this red-violet seedling of Wm. Mohr has acquired the greatest popularity in the shortest time of any Iris ever introduced. One of the very largest of all Irises, the great blooms are daintily ruffled, of a silky texture and remarkable substance. The stems are well branched and at least 3 feet tall. Because it has proven to be hardy everywhere and increases rapidly, the price has reached a point where every genuine Iris connoisseur can and should own it. HM AIS, 1942; AM, 1943. Shown in color on pages 26 and 39.
- EL MOROCCO** (*Becherer, 1945*) Each \$1.00
A beautiful opal-pink Iris whose broad rounded falls and leather-like substance quickly attracts attention. About half way between the colors of Angelus and Morocco Rose; well branched, 36 inches tall.
- EL PASO** (*Kleinsorge, 1949*) Each \$7.50
This seedling of Tobacco Road crossed with Goldbeater is a richer, brighter, more lively golden brown than the famous "tobacco colored" parent. It has a luminous, metallic finish which gives it exceptional richness and a glowing quality which most browns seem to lack. Standards are closed and the broad falls flare gracefully. A large flower of medium height—about 32-34 inches; good branching. Shown on page 3.
- ELSA SASS** (*H. Sass, 1939*) Each 50c; 3 for \$1.25
An entirely new shade of yellow, clear sulphur, with a greenish cast in its depths and a near white blaze near the haft. The blossoms are of good size, rounded in form and slightly frilled at the edges. 3 feet tall. HM AIS, 1939; AM, 1944. See page 35.
- ENVOY** (*DeForest, 1948*) Each \$15.00
Among the most deeply colored of new Irises, the falls practically black but with a hint of brown-purple. The beard is brilliant orange on a solid blackish haft. Standards are bright and silky with a flush of reddish purple. A very impressive thing on 34-inch stems.
- ESQUIRE** (*Lothrop, 1945*) Each \$5.00
Sultry blue-purple—huge, widely branched, commanding in stature and form. Between Violet Symphony and Brunhilde in color. This is one of the best new things from Southern California and it is said to be hardy in the east. 45 inches tall. HM AIS, 1947.
- EXCLUSIVE** (*Grant, 1937*) Each 35c; 3 for \$1.00
Soft powder-blue self, quite different from all other blues. Tall and stately, with blooms of perfect form and thick enamel finish. Just a suggestion of yellow in the center to liven it up. HM AIS, 1937; AM, 1939.
- EXTRAVAGANZA** (*Douglas, 1944*) Each \$6.00
Almost white standards shaded cream at the base, the falls a medley of copper, red, lavender and deep violet, with a violet flush down the center. On the order of Wabash, but is more of a blend especially in the falls. One of the most talked about new things. HM AIS, 1944; AM, 1947.
- FALL DAYS** (*K. Smith, 1947*) Each \$12.50
Glowing flower in autumn colors of copper and red. Standards rose and gold flushed bronze, falls rose-brown with chestnut-brown base and velvety finish. Five by five inches in size, over 40 inches tall and with many branching stems. A colorful mass of autumn red in the garden. HM AIS, 1947.
- FANTASY** (*Hall, 1947*) Each \$15.00
A lovely rose and orchid-toned pink, distinctive and quite different in color from the flamingo pinks. The coloring is smooth and luscious, more vivid than most in this series. Beard is tangerine-red. Beautiful branching, above average size, stout 30-inch stems. HM AIS, 1947; AM, 1949.



Chantilly

FIRECRACKER (*Hall, 1943*) Each \$3.00

A glowing bright burgundy-red plicata, with yellow trim. Well named, it is one of the flashiest things in any Iris collection. The fairly large flowers have good substance and are carried on stout 32-inch stems. HM AIS, 1943. Pictured on page 19.

FIRE DANCE (*Fay, 1947*) Each \$7.50

A much deeper, richer and taller Firecracker. Fire Dance is a burgundy-red plicata, both standards and falls heavily marked all over with dark wine-red, the ground color buff. Flowers are round and full, the falls flaring. Undoubtedly the best in its class and it commands the attention of every visitor. A prolific bloomer, 40 inches tall. HM AIS, 1947.

FLORADORA (*Hall, 1947*) Each \$5.00

A medium toned flamingo-pink, of good form and substance on well-branched 30-inch stems. The blooms are of medium size with a geranium-red beard. Size of flower, foliage and stem are in good balance. A self with no haft markings.

FLORA ZENOR (*J. Sass, 1942*) Each 75c; 3 for \$2.00

Something entirely different in color—a melting cameo-pink that has been referred to as “like the foam on a Strawberry soda.” It has lines of heavier color near the haft, with a most startling shrimp-red beard. Not large, it is an Iris to be enjoyed as a clump, for its most novel color. HM AIS, 1942; AM, 1944.

FORTUNE'S FAVOR (*DeForest, 1944*) Each \$2.50

Really a giant in size, this new blend has about everything one could ask for in a good Iris. The tan standards are broad and closed. The very wide falls are rounded and colored a glistening tan overlaid with lavender flush. Slightly waved and ruffled, lit up by an extra heavy deep yellow beard.

FRANK ADAMS (*Lapham, 1937*) Each 50c; 3 for \$1.25

A tall and very well-proportioned large Iris with rosy tan standards flushed yellow and rosy red falls. It is not a true Variegata but might be called a Variegata blend. The colors are not harsh and blend well in the garden schemes. Flowers, stalk and foliage are unusually large size. HM AIS, 1938; AM, 1940. Shown in color on page 29.

FRIEDA MOHR (*Mohr, 1926*) Each 35c; 3 for 90c

One of the all-time Iris greats. A massive lilac-pink or light rosy violet flower with broad, spreading falls. When established and well grown, this Iris will reach 5 feet in height, with stalks and foliage in proportion. Far from new, it still thrills all who see it.

GALLANT LEADER (*Wiesner, 1939*) Each \$1.00

Broad and well arched standards of deep rose-red; falls velvety maroon touched with coppery gold, especially at the haft. A flower of staggering size, impressive in its richness and regal carriage. 40 inches tall. HM AIS, 1939. Shown on page 19.

GARDEN FLAME (*H. Sass, 1941*) Each \$1.00; 3 for \$2.50

A very deep rose-mahogany, if you can imagine such a color. Called by some judges rose-red, but it is nearer garnet, with a deep rose and brown area about the center. It has no haft markings, making it one of the richest and handsomest of all dark Irises. Large, with very broad falls, and it blooms quite late. HM AIS, 1940; AM, 1943.

GARDEN GLORY (*Whiting, 1943*) Each \$4.00

A pure self of rich Bordeaux-red; a seedling from Red Douglas crossed with Garden Magic. This is one of the nearest to true red of any Iris ever flowered in our gardens; pure, deep and rich, with no haft venation whatsoever. Smoothly finished with deep bronze-gold beard. Height 33 inches. HM AIS, 1945; AM, 1947.

GARDEN MAGIC (*Grinter, 1936*) Each 75c; 3 for \$2.00

A very late, very large, and especially velvety deep red self. After more than ten years it continues to hold its own, right up front among the best red Irises. Many people will hardly believe it costs less than a dollar! Has not increased fast and supply is usually short. HM AIS, 1937. See color cut on page 28.

GAY BORDER (*DeForest, 1949*) Each \$10.00

If you like plicatas and are looking for a new and distinct effect in this line we think you will be pleasantly surprised by this one. The impression is that of a clean white flower bordered and stitched with red. Actually the contrast is not that extreme, for the plicata markings are really bright maroon-rose—a $\frac{3}{8}$ -inch border on the falls!—and the wide falls have a touch of gold at the haft. Large, tall and well branched. HM AIS, 1949.



Minuet

Casa Morena





Patrice



The Capitol



Rajah Brooke

"ACE" COLLECTION 12 for \$15.00

Selections must be made from groups as indicated in brackets.

Select 6

Blue Shimmer
Harriet Thoreau
Ola Kala
Gypsy
Innovation
Sharkskin
Misty Gold
Moonlight Madonna
Red Valor
Show Girl
Azure Skies
Daybreak
Ella Callis

Select 4

Goldbeater
Patrice
Rajah Brooke
Ranger
Casa Morena
Minnie Colquitt
Cloth of Gold
Vice Regal
The Capitol
Lothario
Sylvia Murray
Alpine Glow
Jasper Agate

Select 2

| | |
|---------------|----------------|
| Three Oaks | Master Charles |
| Katharine Fay | Louise Blake |
| Lady Mohr | Cordovan |
| Black Banner | Mt. McKinley |
| Indiana Night | Southern Snow |



Vatican Purple



Minnie Colquitt



Ranger

THE "SUPER" COLLECTION

10 for \$20.00

Your Selection

Vatican Purple
 Solid Mahogany
 Blue Frills
 Good News
 Sharon Kay
 Firecracker
 Tobacco Road

Lake Breeze
 Burgundy Rose
 Juliet
 Sultan's Robe
 Master Charles
 Illinois Sunshine
 Anna Williamson

Lady Mohr

ALL 15 FOR \$30.00



"Jake"

WHITE IRISES the real highlight in any garden flowers of satin, wax, marble, ivory, the fluffiness of clean, fresh snow. You can have them tall or low growing, early or late. To name a few—JAKE, of course, or MATTERHORN, SNOW FLURRY, NEW SNOW, SNOW CARNIVAL, SIERRA SNOW, WINTER CARNIVAL, ARCTIC, GUDRUN, SOUTHERN SNOW, SNOWKING, KATHERINE FAY, LADY BOSCAWEN and SPANISH PEAKS.

GENERAL PATTON (*Kleinsorge, 1947*) Each \$10.00

A solid copper-brown self, liked by some critics as Dr. Kleinsorge's finest production to date. Compared with Bryce Canyon, of which it is a seedling, it is much darker, richer, and appears brown rather than terra cotta in tone. A metallic undertone makes it glisten in the sun. HM AIS, 1947.

GLAD TIDINGS (*Whiting, 1947*) Each \$3.00

One of the most interesting of the new Irises—a unique wax-yellow, very closely branched so that it somewhat resembles a huge Gladiolus spike. Individual flowers are very large and ruffled, the substance amazingly heavy. Lower blossoms are the first to open. 34 inches.

GLORIOLE (*Gage, 1933*) Each 50c; 3 for \$1.25

An Iris of huge size with pale blue petals overlaid with frosty crystal-like particles. Wonderfully well formed and a noble flower, waved and ruffled. Sometimes called "ice-blue." Height 40 inches. HM AIS, 1933; AM, 1935.

GOLDBEATER (*Kleinsorge, 1944*) Each \$2.00

This is the oft-mentioned yellow of the AIS Bulletins, a solidly colored chrome-yellow self that has invariably drawn praise from judges. It is all yellow, deep and bright, without markings or blendings of any kind and the buds themselves are like gobs of deep yellow paint. A good grower, fast increaser, and will make a glorious garden display. Large flowers, excellent branching. HM AIS, 1945.

GOLDEN EAGLE (*Hall, 1942*) Each \$1.00

Brilliant light yellow, with a satiny sheen. One of the largest of all Irises, it is clear, even yellow throughout, without a trace of amber or other shadings. A rapid increaser and easy grower. Mr. Hall considers this one of his best introductions. HM AIS, 1942.

GOLDEN FLEECE (*J. Sass, 1940*) Each \$1.00

A big lemon-colored flower with creamy falls edged gold. Beautifully ruffled, huge in size, tall and a good grower. The illustration on page 9 is an excellent likeness. HM AIS, 1940; AM, 1942.

GOLDEN HIND (*Chadburn, 1934*) Each 35c; 3 for \$1.00

The deepest golden yellow of all. Of medium size and height, with horizontal falls, it is the standard used by most breeders in their efforts for the perfect solid yellow. Very fast increaser and makes a startling golden mass in the garden. HM AIS, 1937.



Firecracker



Gallant Leader



Good News



No. 1 in the 100 Best

OLA KALA AGAIN TOPS THEM ALL!

Winner of the Dykes Medal in 1948 this famous ruffled deep yellow from Jacob Sass led the list of 100 Most Popular Iris in 1948 and 1949. Now, for the third year in a row, it leads the list again. Only the blue Great Lakes can tie that record for popularity.

GOLDEN MAJESTY (*Salbach, 1938*) Each 50c; 3 for \$1.25

For a deep yellow with all good habits we can recommend Golden Majesty above all others in this price field. A big flower with broad falls and closed standards, does not fade in the sun and has proven reliable everywhere. 40 inches tall. HM AIS, 1939; AM, 1940. See page 40.

GOLDEN RUFFLES (*Taylor, 1946*) Each \$5.00

In Southern California, where it was produced, this glorious big solid yellow Iris hardly has an equal. It is a consistent winner there in the shows and a clump in the garden is really the last word. We doubt its hardiness in severe climates but in the South and on the Pacific Coast it is superb. HM AIS, 1946; AM, 1949.

GOLDEN RUSSET (*Hall, 1946*) Each \$5.00

The unusual feature of this flower is its great size. In line with the name, it is golden russet in color—a self. The enormous flowers are 7 inches high and 9 inches wide, with broad hafts. Grows to 40 inches on very heavy stalks. Will evoke many “ohs” and “ahs” from visitors. HM AIS, 1947.

GOLDEN SPIKE (*Whiting, 1940*) Each 60c; 3 for \$1.50

A very popular deep yellow with stunning rich orange beard. One of the deepest colored of all the yellows, it does not fade, has several flowers open at one time, and is both large and tall. HM AIS, 1940; AM, 1942.

GOLDEN TREASURE (*Schreiner, 1936*) Each 50c; 3 for \$1.25

Solid deep cream, but with an outpouring of rich, golden orange all about the central portion of the flower. Tall, perfectly branched, very floriferous, it will stand out in a planting of hundreds of varieties. HM AIS, 1936; AM, 1938. See page 27.

GOOD NEWS (*Kleinsorge, 1946*) Each \$3.00

Brilliant mustard-gold self. A much ruffled flower with immense wide standards, nicely domed. Falls are exactly the same color, with narrow band of copper shading near the outer edges. A sister seedling of Chamois and Bryce Canyon, not quite as tall as either of these, but about 33 inches in height and a profuse bloomer. Illustrated in color on page 19. HM AIS, 1947.

GRAND CANYON (*Kleinsorge, 1941*) Each 75c; 3 for \$2.00

An odd blend of rather deep tones of plum and copper, and gold. Entirely different from any Iris we have ever introduced, it is an Iris to be admired at close range and is especially suited to bringing indoors and associating with Oriental rugs. Attractively formed and delicately ruffled. About 40 inches tall, perfectly branched, and it flowers over a very long season. Very large, it is accurately shown in color on page 27. HM AIS, 1943; AM, 1944.



Ola Kala

GREAT LAKES (*Cousins, 1938*)

Each 75c; 3 for \$2.00

A clear blue self, produced in Canada by Lyman Cousins, of London, Ontario. A broadly spreading regal type of flower, with handsome foliage and 4-foot stalks, ideally branched. Look at its record: HM AIS, 1939; AM, 1940; Dykes Medal, 1942; No. 1 in the AIS judges' symposium for four successive years and among the first ten for nine years! Shown on page 40.

GUDRUN (*Dykes, 1931*) Each 35c; 3 for 90c

Heavily textured enormous white, with petals like those of a Magnolia. A warm or creamy white, with brilliant orange beard and suffusion of gold sprinkling over the entire bloom. Sold very short last year. See page 34.

GYPSY (*Kleinsorge, 1944*)

Each \$1.50; 3 for \$4.00

Coppery gold standards and falls of solid chestnut-brown, silky rather than velvety. A very late Iris that brings something new into the Variegata field. There is such a contrast in the standards and falls, the latter decidedly rounded and uniformly brown without haft markings, that it commands immediate attention. 4-foot stems, lots of flowers. HM AIS, 1945. See page 37.

GYPSY BARON (*Schreiner, 1942*)

Each \$1.00

Very deep blue-purple plicata. The flowers are marbled rather than stitched, giving the blossoms a much darker appearance than the usual plicata type.

GYPSY ROSE (*Whiting, 1946*) Each \$6.00

Rich tapestry-red suffused with a warm glow of copper and a touch of blue in the center of the falls. The blooms are extra large and wide-petaled, with pleasingly rounded form. Very tall and vigorous grower. HM AIS, 1949.

HARRIET THOREAU (*Cook, 1944*)

Each \$1.50; 3 for \$4.00

A new and delightful orchid-pink self of individuality and style. Tall and strong stems, the flowers large and of substantial build with color that is clear and bright; petals slightly waved. Height 38 inches. HM AIS, 1945.

HELEN MCGREGOR (*Graves, 1946*)

Each \$8.00

Clear pale blue, pure and uniform in color, the sensation of the Iris world the year of its introduction. Of perfect form, flaring and daintily ruffled, very large, beautifully spaced on nice stems, it is not only supreme as a light blue but ranks as one of the best of all new Irises. HM AIS, 1946; AM, 1948; Dykes Medal, 1949. See page 8.

HERITAGE (*Hall, 1949*)

Each \$15.00

A flamingo pink of a deeper tone than Hit Parade or Cherie and the outstanding Iris of this color introduced by Hallcroft last year. A nice full petaled flower of heavy substance with slightly ruffled semi-flaring falls and nicely held standards. It's a smooth self with no haft markings and has a bright tangerine beard. A sister of Pink Sensation but of a different shade of pink. Shown on page 115 of "The Iris, an Ideal Hardy Perennial." Height 34 inches. HM AIS, 1949.

HIT PARADE (*Hall, 1947*)

Each \$6.00

Another flamingo pink, with some ruffling, good form and substance, and a little larger flower than Courtier or Floradora, carried on well-branched 34-inch stems. Color is lighter than Courtier and deeper than Floradora and it has the characteristic tangerine beard.



Pretty Quadroom

IDANHA (*Kleinsorge, 1942*)

Each 75c; 3 for \$2.00

This is a tall, pronounced bicolor with apricot-yellow standards and pinky falls. A profuse bloomer on stalks that reach 4 feet, widely and abundantly branched, making it ideal for garden effect—a pink-and-tan picture. Large blooms, lasting over a long period.

ILLINOIS (*Hall, 1949*)

Each \$10.00

A great big creamy yellow, noted for its fine texture and purity of color. The well formed flowers are produced in wonderful profusion on strong 36-inch stems, extra well branched. As either a clump or an individual stalk it attracts all eyes in the garden. HC AIS, 1946.

ILLINOIS SUNSHINE (*Faught, 1946*)

Each \$3.00

A new yellow of great size, deep in general tone but the falls have a slightly lighter central area. Beard is deep yellow. Very tall, widely branched and has increased astonishingly in our garden. HM AIS, 1949.



Lady Mohr

No other Iris—no other flower, in fact—is quite like this. Strange yet beautiful . . . like some mysterious visitor from a far off land.

- INDIANA NIGHT** (*Cook, 1942*) Each \$2.50
Lustrous, deepest, richest velvety purple, almost black. The finest and most satisfying dark Iris of a long series of seedlings from the famous Sable. 38-inch stems, well branched, with every good quality desired in an Iris. Midseason and long lasting. HM AIS, 1942; AM, 1944. Shown on page 42.
- INDIAN HILLS** (*Grant, 1937*) Each 40c; 3 for \$1.00
Rich true purple, more red than blue, with a silky sheen about it that gives it exceptional brilliance. Very large oval-shaped blossoms, a rampant grower and one of the most effective as a garden mass—gloriously vivid.
- INNOVATION** (*Hall, 1945*) Each \$1.50
A rose-trimmed plicata, brighter and more colorful than other pinkish plicatas. It carries a lot of color—a pink Firecracker, as it were—with 3-foot stems and good branches. Hardy and increases fast. HM AIS, 1947.
- INSPIRATION** (*Stevens, 1937*) Each \$1.00
Brilliant cerise-rose, huge and imposing. This is the only Iris we have in this color—something entirely different and it happens to have all good points. Practically a self, with slightly brownish warm cast on the haft.
- JAKE** (*Long-Sass, 1943*) Each 60c; 3 for \$1.50
A white white, with no other color in it except a trace of pale yellow near the center. Large flowers, well formed, free blooming and an easy grower. Stands right up alongside many more expensive new whites. See page 18.
- JASPER AGATE** (*Williams, 1943*) Each \$2.00
Distinct new shade of copper-gold-red, with an underlying copper-pink tone throughout the entire flower. Hard to describe, it is really a new color to the Iris spectrum, with smooth velvety finish and no veining; a true self. HM AIS, 1944.
- JEAN CAYEUX** (*Cayeux, 1931*) Each 35c; 3 for 90c
A smooth, soft, light buff, described by some as “coffee colored.” The stems are tall and well branched and the large flowers are slightly wavy. A very distinct Iris.
- JULIET** (*Kleinsorge, 1946*) Each \$3.00
We think that this is one of the most colorful and fiery blends that we have seen. It is a sort of flame-copper, with salmon shadings, and the beards and central areas are a mass of brilliant burnt orange. Large flowers; the standards upright and well closed, the falls broad and distinctly flaring. Increases fast and makes a gorgeous clump. HM AIS, 1947.
- JUNALUSKA** (*Kirk, 1934*) Each 40c; 3 for \$1.00
Copper-red falls and copper-gold standards—a magnificent Iris with a coppery red garden effect. An early bloomer, very tall and well branched. Always admired and one of the “best sellers” in this catalog. Runner-up for the Dykes Medal in 1938. HM AIS, 1936; AM, 1937.
- KATHERINE FAY** (*Fay, 1945*) Each \$2.50
A grand white, large, tall and with semi-flaring ruffled blooms. All white, with no yellow in the center. It is an easy grower and rapid multiplier, 100% hardy. HM AIS, 1945; AM, 1947.
- LADY BOSCAWEN** (*Graves, 1946*) Each \$6.50
Alabaster-white perfection in color and form. In the originator's garden it grew to 4 feet in height with magnificent branching. Slightly ruffled, it bears some resemblance to Helen McGregor in form. Beard is light yellow and does not contrast with the pure white effect. AM AIS, 1948.
- LADY MOHR** (*Salbach, 1944*) Each \$2.50; 3 for \$6.00
A new and altogether different addition to the interesting Wm. Mohr family of Iris, this one brings a color combination previously unknown in the tall bearded group. Standards are oyster-white, huge and slightly fluted, with strong midribs. Falls are pale chartreuse or greenish yellow, with prominent veining. There is a very prominent dark patch surrounding the beard. Lady Mohr was the center of interest in our garden last season, where some of the stalks reached 4 feet in height and carried several open blooms at one time. HM AIS, 1944; AM, 1946. Shown on the left.
- LAKE BREEZE** (*Fay, 1945*) Each \$3.00
A seedling of Gloriole, with much of its charm and frosty pale blue tone. Lake Breeze is heavily ruffled, the falls flaring and wide with no haft markings. A bit deeper in color than Gloriole, slightly larger, the stems carrying 9 to 11 flowers. Three feet tall. HM AIS, 1945.
- LAKE GEORGE** (*K. Smith, 1945*) Each \$3.50
When this violet-blue Iris was introduced it was announced as possibly the “bluest” of all. A parent of Blue Valley, it still maintains a claim to this distinction. Self colored, the standards roundly domed, the falls broad and flaring straight out. There are no haft markings and the beard is pale yellow tipped blue at the end. Medium height, a rapid increaser. HM AIS, 1945.
- LAKE SHANNON** (*DeForest, 1945*) Each \$4.00
A mighty close approach to bright indigo-blue. Practically a self, with fluted standards and falls. An odd feature about this Iris is the deeper veins running the length and breadth of the falls. Beard uniformly blue, shading to orange within the flower. 36 inches, well branched. HM AIS, 1946.
- LATE SUN** (*DeForest, 1940*) Each 75c; 3 for \$2.00
A big bold solid yellow which has received high praise in all parts of the country. Flowers measure 6 inches, petals are thick and heavy, and of a uniform deep yellow color. Strong growing, with tall stalks and rampant foliage. Perfectly hardy, about 40 inches tall. HM AIS, 1942.
- LIGHTHOUSE** (*Salbach, 1936*) Each 50c; 3 for \$1.25
This bright rose blend is one of the most sought after Iris we grow. Standards are a blend of rose and yellow; falls coppery old rose, with a very bright beard and glowing center. Perfectly hardy, rapid increaser; an Iris that is certain to add life to your planting. HM AIS, 1937; AM, 1940.
- LIGHTS ON** (*Lapham, 1946*) Each \$6.00
A new claimant for the title of reddest Iris. It is more of a self than Red Gleam, with even less of the brown in its makeup. Well shaped, with solid unveined hafts, velvety falls and vivid color. 30 to 36 inches in height. HM AIS, 1946.
- LORD DONGAN** (*Smith, 1940*) Each \$1.00
A stunning creation with broad standards of Chinese violet and extra velvety falls of deepest Pansy-violet, set off with a very thick, intense, pale yellow beard. HM AIS, 1940.
- LOS ANGELES** (*Mohr-Mitchell, 1927*) Each 40c; 3 for \$1.00
A beautiful white and blue plicata which ranks, despite the many years it has been in commerce, with the best Iris of the present day. Almost entirely white, the blue stitching appears near the haft. Blue style arms and a golden beard give it great distinction. AM AIS, 1944.
- LOTHARIO** (*Schreiner, 1942*) Each \$2.00
An Amigo-type amoena; very rich and velvety, much taller than the famous Amigo and with flowers of great size. Contrast in color is not as sharply defined as in the case of its predecessor but it is a magnificent Iris. Stock is extremely scarce. HM AIS, 1945.
- LOUISE BLAKE** (*Smith, 1943*) Each \$2.50
Of the Amigo type, with pale sky-blue standards and velvety blue-purple falls edged sky-blue. Lighter in color than Amigo, otherwise quite similar. HM AIS, 1944; AM, 1947.
- LOUVOIS** (*Cayeux, 1936*) Each 50c; 3 for \$1.25
Brown, deep, rich and velvety, like the lustrous fur of an animal. Breeders are still trying to attain an Iris that will be an improvement on this distinct French creation. Done in two shades of chocolate, it is well illustrated on page 35. Big flowers, medium height. HM AIS, 1939.
- LULLABY** (*Hall, 1943*) Each \$1.50
Apple-blossom to orchid-pink, a luscious color in a large oval flower. Standards and falls are nearly the same shade, the latter without haft markings. Very tall and well branched. Stock very limited.

IN
FULL
FLOWER



GROWN IN OREGON... THE NATION'S BULB BASKET

Here are some behind-the-scene shots which may help you to know us . . . and your Irises . . . better. The field above shows ten acres of bloom in mid-May. Just a month later, below, the flower stalks cut off, the crop of rhizomes is ready for digging. At the right, this same planting photographed in September—just 9 months before! Fertile soil, clean and frequent cultivation does it.

The final touch. Packed in clean, soft, white cottonwood excelsior which absorbs surplus moisture and prevents bruising, the cartons ventilated with air holes, this stack of Iris orders is about to go to the post office and thence to America's gardeners.





Below, on the right, some of these same Iris plants grow in a customer's garden . . . near the Canadian border perhaps, or the Sunny South, or in New York, or in the heart of the Great Plains . . . everywhere!



Annual \$5 Collection

TEN — YOUR CHOICE FOR \$5.00



Elmohr



Ming Yellow

4 PAGES TO SELECT FROM



Tiffanja



Sable



Prairie Sunset



Melitza

FIFTY MODERN IRIS

in the widest possible variety of color, form, height and garden effect. Sixteen are illustrated on these four pages . . . many others are shown throughout the catalog. For twenty years this has been America's greatest Iris value.

| | | | |
|--------------------------------------|---|----------------|-----------------|
| Select 3 From This Group | } | Berkeley Gold | Winter Carnival |
| | | Elmohr | Inspiration |
| | | Mulberry Rose | Garden Flame |
| | | Prairie Sunset | Gallant Leader |
| | | Tiffanja | Spun Gold |
| | | Sable | Peachblow |

NOW TURN THE PAGE—



Grand Canyon



Golden Treasure



Spun Gold



Garden Magic

— and pick the remaining seven from this and the next page.

- | | | | |
|--------------------------------------|---|--------------|-----------------|
| Select 4 From This Group | } | Alastor | Melitza |
| | | Balmung | Jake |
| | | China Maid | Morocco Rose |
| | | Flora Zenor | Old Parchment |
| | | Garden Magic | Red Gleam |
| | | Great Lakes | The Red Douglas |
| | | Grand Canyon | White Goddess |
| | | | Ming Yellow |

Balmung



Morocco Rose





Frank Adams



Winter Carnival



Old Parchment



Peach Blow

Select
3
From
This
Group

- Arctic
- Angelus
- Buffawn
- Christabel
- Damerine
- Elsa Sass
- Frank Adams
- Amigo

- Golden Majesty
- Lighthouse
- Los Angeles
- Ormohr
- Prince of Orange
- Radiant
- Snoqualmie
- Golden Treasure

- Tiffany
- Treasure Island
- Matterhorn
- Marquita
- Missouri
- Louvois
- Wabash

A TOTAL OF 10 YOUR CHOICE FOR \$5.00 Labeled and Postpaid

In making up your selection, be sure to confine it to the groups as outlined in each bracket.

**If you wish,
double the
number
chosen from
each bracket,
a total of
20 for \$10.00.**

- LYNN LANGFORD** (*Hall, 1946*) Each \$5.00
Orchid-pink in a deep tint, with golden yellow center. There is no veining to detract from the general orchid coloring except that the beard is golden yellow. Flowers are large, very flaring in form, produced on stout 3-foot stems. HM AIS, 1946.
- MAJENICA** (*Cook, 1941*) Each 75c
Distinct new pinkish blend with a tinge of salmon. This is a pleasing flower in every way with wide-petaled standards and falls; full, rounded and huge in size. Less pink and more orange than Eros, but a somewhat similar color effect. Height 3 feet. HM AIS, 1943.
- MARION VAUGHN** (*Smith, 1947*) Each \$10.00
Standards of soft lemon ice, frosted. The falls, including the beard, are of the same color with a white flush below the beard. Both standards and falls are delightfully ruffled or fluted. A slight greenish cast gives it an especially fresh, cool and crisp appearance. Thirty-six inches, four branches.
- MARQUITA** (*Cayeux, 1931*) Each 40c; 3 for \$1.00
A well-named Iris in brilliant ivory-yellow, with orchraceous maroon veinings on the falls. Glorious ivory standards, deepening to sulphur at the base. Falls same color, but entirely lined maroon. Never enough stock to go around. AM AIS, 1936.
- MARY E. NICHOLLS** (*Nicholls, 1939*) Each 50c; 3 for \$1.25
Has the creamy smooth heavy finish of white kid leather with dull green-gold overlay at the haft. Beautiful form, medium in size, a prolific bloomer and fast increaser. One of the most popular white varieties, unique and beautiful. HM AIS, 1940; AM, 1943.
- MASTER CHARLES** (*Williamson, 1943*) Each \$2.50
Rich and glowing mulberry-purple, with definite charm and flare to the form. Standards are true purple, with blackish sheen blending to brown at the base. Falls the same color blended brown at the haft. Beard mulberry-purple tipped brown. Brilliant and distinctive, it is undoubtedly one of the finest of Longfield introductions. HM AIS, 1944; AM, 1946.
- MATTERHORN** (*J. Sass, 1938*) Each 50c; 3 for \$1.25
Pure white; large but delicate in appearance. Even the beard is white. Three feet in height, with slender, well-branched stems and many flowers widely spaced. Unmatched for purity of color and will please anyone who is looking for the best white at a reasonable price. HM AIS, 1938; AM, 1940.
- MELANIE** (*Hill, 1941*) Each 60c; 3 for \$1.50
This splendid new light pink comes to us as the finest introduction of H. M. Hill, of Lafontaine, Kansas. Color is orchid-pink, close to true pink, and there are as many as five open flowers at once on the 40-inch stalks. HM AIS, 1941.
- MELITZA** (*Nesmith, 1940*) Each 75c; 3 for \$2.00
Pale ivory-flesh, particularly effective in dull weather. Much of the unusual color effect of this Iris is derived from the fiery tangerine-orange beard. No Iris that we have ever grown has increased so rapidly and it is at its best on a two-year clump. Height 36 to 40 inches. Shown in color on page 27. HM AIS, 1940; AM, 1942.
- MELODIST** (*DeForest, 1946*) Each \$5.00
A henna-colored blend on gold ground. The salmon and rose tones of Salar blended with the golden brown of Tobacco Road, its parents. 38 inches. HM AIS, 1947.
- MELODY LANE** (*Hall, 1949*) Each \$15.00
Bright glistening golden apricot, although it came from two flamingo-pink seedlings. The color is most attractive and new, with great carrying power in the garden. Many of these new shades crop out in the offspring from pink parents. The flowers are very large with some ruffling, good form and a heavy brilliant tangerine beard. Early, with 36-inch stems.
- MELLOWGLOW** (*Whiting, 1942*) Each \$4.00
Deep peach or apricot, with a flush of pink. A highly ruffled and perfectly formed Iris, with very broad and rounded standards and falls. The beard is extra heavy and extends far down the fall. Mrs. Whiting's most noteworthy introduction among many excellent ones, and stock is very scarce. HM AIS, 1942.
- MEXICAN MAGIC** (*Whiting, 1947*) Each \$5.00
A brilliant medley of Spanish red and copper with a strong blaze of blue in the falls. Beautifully full and rounded. Medium height and not very well branched but a rich jewel in color and well worth the price.
- MEXICO** (*Kleinsorge, 1943*) Each \$2.00
Gay and brilliant, a blended bicolor of buff golden standards and broad plushlike falls of glowing red-brown, bordered and blended golden buff. A perfectly gigantic flower, with the falls slightly crinkled and waved at the edges. A blend rather than a Variegata. Very late. HM AIS, 1944. Stock limited.
- MIDWEST GEM** (*H. Sass, 1937*) Each 50c; 3 for \$1.25
Bright golden apricot, more buff than yellow, with a faint cast of pink over the falls. Immense in stalk and flower, it is particularly attractive because of the odd crimped petals. HM AIS, 1937.
- MING YELLOW** (*Glutzbeck, 1938*) Each 75c; 3 for \$2.00
A yellow without a fault; clear, rich, smooth without venation, big and slightly waved. Lighter in tone than Golden Majesty and much earlier. Wide petals, very bright yellow beard. HM AIS, 1938; AM, 1941. Shown in color on page 26.
- MINNIE COLQUITT** (*H. Sass, 1942*) Each \$2.00; 3 for \$5.00
Massive white plicata, entirely different from all others. It has a broad band of wine-purple stitching at the edges of the enormous flaring falls, and this same color is repeated in the standards. The whole flower is slightly ruffled. A thoroughly fine Iris in every way, and a husky grower. HM AIS, 1943; AM, 1945. See page 17.
- MINUET** (*Kleinsorge, 1949*) Each \$8.00
A heavily ruffled and fluted blend, predominantly old gold in color but with falls of delicate lavender-blue bordered with old gold. The finely netted haft is soft brown, the beard very rich orange. Parentage is Chamois x Cascade Splendor and the form of Minuet very closely resembles this latter parent. 40 inches tall, medium branching. Shown on page 15.
- MISS CALIFORNIA** (*Salbach, 1936*) Each 50c; 3 for \$1.25
Gigantic lilac-pink; one of the most satisfactory varieties we have ever grown. It makes great fans of purple-tinged foliage, produces a wealth of 4-foot stalks of great pink-toned blooms that last over a very long period. Does equally well in all parts of the country. HM AIS, 1938.
- MISSOURI** (*Grinter, 1933*) Each 50c; 3 for \$1.25
A famous clear blue that won the Dykes Medal in 1937. Color is especially fine when afforded light shade from the afternoon sun. Sells out every year.
- MISTY GOLD** (*Schreiner, 1943*) Each \$1.50
A lovely gold-spangled, lemon-colored Iris, lemon toned and gold braided. Petals are ruffled and fluted, lacy and brilliant. Three feet tall; slender, well-branched stems. An unusual and beautiful flower. HM AIS, 1945. See page 38.
- MOONLIGHT MADONNA** (*J. Sass, 1943*) Each \$1.50
Of the same shade of lemon-ice as Elsa Sass, with larger flowers and flaring form. Self colored, it is the lemon-toned Iris we have been looking for. Tall and sturdy, a rapid increaser. HM AIS, 1943; AM, 1945.
- MOROCCO ROSE** (*Loomis, 1937*) Each 60c; 3 for \$1.50
A very large rose-pink self with soft yellow glow at the heart and brownish cast about the haft. Still ranks among the best pinks and pleases all who buy it. Unlike many Iris in this color class, Morocco Rose is a truly big flower. Always in heavy demand. See page 28.
- MT. MCKINLEY** (*Schreiner, 1947*) Each \$2.50
Derived from Amigo crossed with Wabash, about midway between these two in color tones. Early blooming and tall, the standards opening pale blue and fading to cool white. Falls are deep purple edged with pale blue and with a brownish haft devoid of veinings. Better and lower branched than the famous Wabash.



For garden color galore, or as a hobby-

Arctic

Below, and in our Oregon garden



NOVELTY COLLECTION

Select any 10 for \$30.00

| | | |
|---------------|----------------|------------------|
| Dreamcastle | Pink Cameo | Black Forest |
| Floradora | Golden Ruffles | Cascade Splendor |
| Golden Russet | Premier Peach | Blue Glow |
| Chamois | Mellowglow | Three Cheers |
| Redwyne | Chantilly | Lake Shannon |
| Garden Glory | Bryce Canyon | Lake George |

"MASTERPIECE" COLLECTION

Select any 10 for \$45.00

| | | |
|----------------|---------------|------------|
| Helen McGregor | New Horizon | Hit Parade |
| Rocket | Lady Boscawen | Lights On |
| Chivalry | Courtier | San Antone |
| Firedance | Extravaganza | Orelia |
| Distance | Rose Splendor | Bagdad |
| Salamonie | Rodeo | |

[32]





Garden of Fred Cassebeer, New York

SOME FOLKS SAY ~

Devon, Connecticut.

"I compliment you on your 'know how' in getting plants from Oregon to Connecticut in the most excellent condition." H. E. HATHAWAY.

*112 Parklea Drive,
Leaside, Toronto 17, Canada.*

"The rhizomes were all in first class condition and I was delighted with the quality of the stock. And what extras!" HAROLD S. DAY.

*420 Holger Drive,
Montebello, California.*

"Thank you for the perfectly beautiful rhizomes—my first order from your gardens. Every one of them have started to grow after only 2 weeks in the ground." MRS. DONALD F. PURDY.

112 Ohio, Eldorado, Kansas.

"When I send an order to you I know it will be handled just as carefully as if I were there in person and I want you to know that I truly appreciate that." MRS. GEO. F. MORGAN.

Laurelwood Road, Holden, Massachusetts.

"I have always been pleased both with what I have ordered and with what you have contributed extra." MRS. CARL B. FITTON.



Pink Sensation

And from coast to coast

BARAINS *for* BEGINNERS

10 FOR \$3.00

YOUR CHOICE, 1 OF A KIND

Every plant correctly labeled and sent postpaid.

Select up to 6
(but not more than
6 from this group.)

Select at least 4
(but not less than
4 from this group.)

Amigo
Christabel
Louvois
Tiffany
Arctic
City of Lincoln
Elsa Sass
Gloriole
Copper Lustre
Nassak

California Gold
Gudrun
Indian Hills
Junaluska
Anitra
Golden Hind
Jean Cayuex
Sierra Blue
Destiny
E. B. Williamson
Snowking

Be sure to make your selection
from brackets as indicated.

ALL 21 FOR \$6.00 (A \$9.00 Value)



Gudrun



*California
Gold*



Anitra



Amigo



Tiffany



Louvois



Elsa Sass

HERE IS WHAT YOU GET

Plants dug from annually re-set fields of fertile soil exhibit astonishing root development. They are not boosted with fertilizer or irrigation, but grow on naturally after flowering. Started right, tended with care, they cannot help being just right at digging time. These long roots will anchor the rhizomes in the ground and get them off to a quick start in your garden.



City of Lincoln



Wabash

- MULBERRY ROSE** (*Schreiner, 1941*) Each \$1.00; 3 for \$2.50
Aptly described by the name, this new Iris is actually something new and different in coloring. Very tall stems hold the self-colored blooms well aloft, and the branching is good. Most unusual in color, it might be termed a deep pinkish mulberry, strongly shaded brown. The heavy bronze beard is an added asset. HM AIS, 1943; AM, 1944. Shown on page 31.
- NANKEEN** (*Whiting, 1947*) Each \$6.00
Clear, cool Chinese-yellow enlivened by soft rays of chrome-yellow smoothly spread over the whole flower. Massive in size but well proportioned and carried on tall well-branched stalks. Stays fresh and attractive in all kinds of weather. A radiant Iris for garden effect and will attract much comment when exhibited.
- NASSAK** (*H. Sass, 1938*) Each 50c
Tall plicata, white ground with blue stitching on the edges. For customers who desire an Iris of the Blue Shimmer type at a low price we recommend this one. 36 inches tall.
- NEW HORIZON** (*Fay, 1946*) Each \$6.00
Close to true peach coloring—not pink but the delectable tint of peach ice cream! Standards are a bit deeper than the falls. There are no haft markings of note and the beard is fiery tangerine. From the same breeding lines as the flamingo-pinks. Three feet or over in height and of good size and fine form. HM AIS, 1947.
- NEW SNOW** (*Fay, 1946*) Each \$7.50
A white Iris which is neither a warm nor a cold white but is as white as new snow. The beard is full and bright yellow, adding a great deal of life. This is the only color in the flower, as there are no haft veinings or markings. Stalk is sturdy and well branched, 40 inches tall, the big flowers very much ruffled and flaring. One of the world's best white Irises. HM AIS, 1946; AM, 1948.
- NIGHTINGALE** (*Hall, 1942*) Each \$1.00; 3 for \$2.50
The coloring of this Iris is really new, a glistening golden russet. Surely a glorious and pleasing color, and the flowers are of large size and on good stout stems. Both standards and falls are identical in tone and even the beard is in harmony. Height 3 feet. HM AIS, 1944.
- OLA KALA** (*J. Sass, 1943*) Each \$1.50; 3 for \$4.00
Just now we have an abundance of fine deep yellow Irises, but here is one that perhaps outdoes all the others for depth of color and in addition it is heavily ruffled. Medium large flowers on nicely branched 36-inch stalks. So yellow it is almost on the orange side. HM AIS, 1943; AM, 1945. Dykes Medal, 1948. See page 20. No. 1 in 100 best this year!
- OLD PARCHMENT** (*Kleinsorge, 1939*) Each 60c; 3 for \$1.50
Light creamy tan, with golden buff overlay; a most unusual color break and a distinctly beautiful new Iris. Standards are domed and closed; falls wide and rather tailored in appearance. A perfectly huge bloom, heavy in substance, and the longest lasting variety in our garden. HM AIS, 1940; AM, 1941. See page 29.
- OPAL CLOUD** (*Kleinsorge, 1949*) Each \$7.50
A huge blend of pinkish opalescent tints. Not a pink Iris, but a harmony of pearl and opal and soft rose with coppery shading near the border of the falls. This copper suffusion is present near the hafts and the crests are copper colored. The over-all effect is a sort of terra-cotta-pink with pale violet suffusions. Cascade Splendor crossed with Daybreak. 42 inches tall and very well branched. See page 43.
- ORELIO** (*DeForest, 1947*) Each \$6.00
Deep crimson-brown, more red than brown. Obtained from Casa Morena crossed with Garden Flame, which will convey some idea as to the color of this rich new Iris. It is large, tall and well branched. HM AIS, 1948.
- ORMOHR** (*Kleinsorge, 1937*) Each 50c; 3 for \$1.25
One of the largest Irises in existence, and especially noteworthy because it is a seedling of Wm. Mohr. It reaches 40 inches in height, with several great blooms on well-branched stalks. The color is pale lilac with a silvery cast, veined violet. Darker when first opening and in dull weather. HM AIS, 1939; AM, 1940.
- PALE PRIMROSE** (*Whiting, 1946*) Each \$1.50
A late, cool primrose-yellow with a touch of wax-yellow at the haft. Of an attractive and useful color, the form of this Iris is its real distinctive feature. It is oval, with standards closed and swirled at the top; the falls are long but so wide they nearly touch each other, the effect is of a huge yellow rosebud. Very late, high branched and tall—most effective in back of a planting.
- PATRICE** (*DeForest, 1945*) Each \$2.00; 3 for \$5.00
New white plicata which we like very much and which we regard as different from the many others listed. Standards light cream flushed pale rosy lavender; falls sparkling white brushed bright gold across the haft which is speckled rose-brown. Refined, clean and very brilliant. Tall and large, with all good points. HM AIS, 1946. See page 16.
- PEACHBLOW** (*H. Sass, 1943*) Each \$1.00; 3 for \$2.50
A pinkish plicata with yellow ground, illustrated perfectly in color plate. This Iris has the remarkable faculty of "carrying power" and its pinkness accents any spot where it is planted. Oval-shaped blooms on tall stems, nicely branched. Rapid increaser. See color plate on page 29.
- PIERRE MENARD** (*Faught, 1948*) Each \$17.50
Finest of the new medium toned blues. The introducer calls it a Hyacinth-blue, with some of the fine netting in slightly deeper shade that distinguishes Great Lakes. Beard is canary-yellow. Very flaring in form, large and with broad segments, 36 to 40 inches tall. A very, very blue Iris. HM AIS, 1948.
- PINK CAMEO** (*Fay, 1946*) Each \$4.00
One of the new series of "flamingo" pinks—a true pink devoid of violet influence—the kind of pink Iris we have all been wishing to see. Color is described as pale cameo-pink, a self, with a startling tangerine beard, like a tongue of flame on the hafts. An Iris of good size, 3 feet in height. HM AIS, 1946; AM, 1948.
- PINK FORMAL** (*Muhlestein, 1949*) Each \$25.00
A new deep pink which we have not seen prior to writing this catalog but which is conceded to be sensational. It is large in size and very tall, with red-tangerine beard. Very few plants for sale. HM AIS, 1949.
- PINK REFLECTION** (*Cook, 1942*) Each \$1.50
Chamois-skin-pink self, a peculiar and enchanting shade unlike anything else. There seems to be a fleeting buff undertone. A crisp and clean cut flower, flaring in form, with very heavy texture. The beard is lemon. Height 3 feet; very late. HM AIS, 1942; AM, 1944.
- PINK RUFFLES** (*Smith, 1940*) Each 75c; 3 for \$2.00
Solidly colored lilac-pink that might be classed as an intermediate because of its low growth—about 24 to 28 inches. The flowers are self colored and heavily fluted and ruffled, produced in great number. HM AIS, 1940; AM, 1942.
- PINK SENSATION** (*David Hall, 1948*) Each \$15.00
From the garden of the world's foremost breeder of pink Irises we selected this new creation when it first flowered in the spring of 1946. That same year it was seen and admired by many Iris critics, including Mr. Harry Randall, president of the Iris Society of England, who gave it special mention in his review of American Iris visits. True delicate light pink, without any influence of lilac or salmon tones, and sporting the famous tangerine or orange-red beard, it is just the kind of pink Iris you have been wanting. PINK SENSATION is a large flower, full and rounded in form, with laciniated petal edges. Extremely early—one of the very first of the tall bearded to come into flower. Height about 33 inches. Shown on page 33.
- PRAIRIE SUNSET** (*H. Sass, 1939*) Each \$1.00; 3 for \$2.50
All that has been said about this gorgeous Sass creation is true, but it simply has to be seen to be realized. The blendings of peach, apricot, rose, copper and gold are so well done that one is at a loss to describe it adequately. The picture on page 27 is fairly accurate, however, and leaves but little to the imagination. A fine big flower that will give you a thrill every time you look at it. HM AIS, 1937; AM, 1941; Dykes Medal, 1943.



Gypsy



Pink Cameo

PREMIER PEACH (*Hall, 1946*)

Each \$5.00

From the new "flamingo" pink series, but less pink and more the color of peach ice cream—a smooth, soft and very delicate shade. This has the typical tangerine-red beard. Good size and form, just under 36 inches in height. HM AIS, 1946.

PRETTY QUADROON (*Kleinsorge, 1948*)

Each \$15.00

Smooth, metallic, light copper-brown or pale tan, with a hint of lavender and gold as an undertone. The flowers are of faultless form—wide hafts, spreading falls and large, closed standards. The beard is brown. It is a color most difficult to describe but it has much more life and attraction than these coppery tans usually provide. The one seed pod from whence it came (Mexico x Tobacco Road) produced at least six of these interesting blends and we selected this and VOODOO as the best and most novel in color. Height 33 to 36 inches. It is shown on page 21. HM AIS, 1948.

PRINCE OF ORANGE (*Kleinsorge, 1940*)

Each 50c; 3 for \$1.25

A seedling of Far West and Naranja. Solid golden orange, one of the richest things in the garden picture. Flowers of medium size, very flaring in form, widely spaced along the branching stems. HM AIS, 1942; AM, 1944.

RADIANT (*Salbach, 1936*)

Each 50c; 3 for \$1.25

Standards of burnished golden bronze; falls glowing copper-red; one of the most strikingly brilliant Iris obtainable. Of better than average size, well branched. Produces an immense quantity of bloom and increases rapidly. HM AIS, 1933.

RADIATION (*Hall, 1943*)

Each \$15.00

A pleasing tone of orchid pink, the standards and falls the same color, with a remarkable deep tangerine beard and burnt-orange glow at the heart. Standards of the large flowers are domed, the falls semi-flaring and very wide. A more intensely colored flower than Cherie or Heritage it produces a most vivid pink garden picture. Heavy substance and sturdy growth on 32-inch well branched stalks. HM AIS, 1943.

RAJAH BROOKE (*Norton, 1945*)

Each \$2.00; 3 for \$5.00

Rich topaz-yellow standards shot with bronze; the falls deep pigeon-blood-red. Haft is solidly colored, clear into the throat, giving the flower an extra rich effect. Not brilliant and garish, Rajah Brooke is an Iris in luxurious, subdued hues reminding of an Oriental rug. HM AIS, 1946. In color on page 16.



Blue Shimmer



THE "TIP TOP" TRIO

These Three for \$5.00

One each of *Pink Cameo*, *Blue Shimmer*, and *Misty Gold* for \$5.00. A lovely pastel group for your garden and a \$7.00 value!



Elmohr

RANGER (*Kleinsorge, 1943*) **Each \$2.00; 3 for \$5.00**
 Dark but very bright almost true crimson-red. A decided self, with long, cone-shaped, closed standards and wide falls of glossy velvet. Bronze-orange beard on a brownish toned haft, with very little venation. One of the last to bloom, a sure producer of flowers and lots of them, with straight stems and fine branching. Very large, 36 inches tall. HM AIS, 1944; AM, 1946. Shown on page 17.

RED GLEAM (*Lapham, 1939*) **Each 75c; 3 for \$2.00**
 Here is the red Iris that actually looks red and has been declared the nearest approach to scarlet thus far obtained in this flower. It is of good size, of beautiful semi-flaring form, 3 feet in height and a free bloomer. Texture is velvety but excitingly brilliant. HM AIS, 1940; AM, 1941.

RED TORCH (*H. Sass, 1947*) **Each \$4.00**
 Standards rich deep buff or bronze-gold, falls pure velvety red—quite the nearest true red of any Iris, solid to the edge. There is not the sharp contrast found in true variegatas, thus this Iris might be termed a blend or variegata-blend. Of moderate height and size, the flowers perfectly formed and decidedly flaring. HM AIS, 1947.

RED VALOR (*Nicholls, 1939*) **Each \$1.50**
 A superb big red that has been gaining popularity each season. A garnet-red self with brown beard. It won the Roman Gold Medal in 1940; the HM of the AIS in 1941, and the AM in 1493. Because it is absolutely hardy and has given satisfaction everywhere, it is in great demand and stock remains scarce.

REDWARD (*Cook, 1942*) **Each \$3.00**
 Deepest crimson-red—an approach to red from the purple side without the orange or brown influence as in the case of the 3 varieties listed just above. A large and brilliant Iris with widely flaring velvety falls. HM AIS, 1945.

REDWYNE (*McKee, 1945*) **Each \$5.00**
 Deep but bright mahogany red self. The medium size flowers are solidly colored, including a smooth haft, and the finish is particularly velvety. Beard is bronze-gold. One of the “reddest” Irises, especially brilliant in the garden. HM AIS, 1945.



Golden Majesty

Great Lakes

Snow Flurry

REMEMBRANCE (*Hall, 1942*) **Each \$1.00**

Of a bewildering number of pink blends raised by David Hall, this appears to be the best. Although the predominant note is a delightful shade of light pink, there is enough yellow in the big flowers to class it as a blend. Well shaped, with very strong stems, it is 38 inches tall. Limited stock. HM AIS, 1943; AM, 1944.

ROCKET (*Whiting, 1945*) **Each \$8.00**

Here is an Iris the name of which is truly indicative of its rise to fame. An orange self, the standards pure deep chrome and the falls orange-chrome almost to the edge. There is a burnished finish on the falls which lends extra depth to the color. Ideal form, nice branching and grows to 3 feet. HM AIS, 1945; AM, 1947.

RODEO (*DeForest, 1947*) **Each \$6.00**

Brighter color in the same pattern as Tiffanja and much larger than that distinct and popular Iris. Standards clear gold, falls white, edged with gold. Style-arms are gold and the beard brown tipped with gold. The light marking, or stitching, is brown. As big and conspicuous as a "ten-gallon" hat, hence the name. HM AIS, 1949.

ROSE SPLENDOR (*Kleinsorge, 1947*) **Each \$6.00**

The picture on page 45 is a very close likeness, although the Iris is actually more pink than this would indicate. When fully opened it is very pink indeed, a luscious color remindful of a ripe Watermelon except for the slight coppery tints. About 3 feet in height, a strong grower, well branched. Unlike any other near pinks in this catalog. HM AIS, 1948.

ROSE TOP (*H. Sass, 1941*) **Each \$2.00**

This bright rose-pink plicata provided the greatest surprise of our 1945 season. Blooming after every other Iris had passed, not many visitors saw it. Highly ruffled, the big blossoms of deep cream have a heavy pattern of vivid rose-pink stitching which seems to possess exceptional carrying quality. Viewed a block distant it looked like a red and white bicolor. HM AIS, 1943.

ROYAL SCOT (*Hall, 1944*) **Each \$1.00; 3 for \$2.00**

A tall and large flowered red trimmed plicata of a pleasing tone of burgundy-red. It is so heavily trimmed that at a distance it gives a red effect. Form, substance and stem are good, and it increases fast and blooms freely. HM AIS, 1944.

RUBIENT (*Whiting, 1942*) **Each \$1.00; 3 for \$2.00**

A taller, much redder, Amigo. Standards are rich Pansy purple, very brilliant; the falls blackish red-purple with a neat edge the same tone as the standards. Stems reached a height of over 40 inches in our garden.

RUSSET WINGS (*Wills, 1946*) **Each \$6.50**

Smoothly blended big flowers of gold, copper and apricot—a russet colored self. Form is faultless, with wide standards perfectly held and flaring falls ruffled at the edges. Height 38 inches. HM AIS, 1946.



Dreamcastle

SABLE (*Cook, 1938*) Each \$1.00; 3 for \$2.50

Almost black; a uniform shade of deepest blue-black-violet, with blue beard. Sable has every attribute that a fine Iris should possess; large size, reasonably tall stalks, thick substance and a wonderfully lustrous sheen. Everybody wants Sable. HM AIS, 1937; AM, 1940. See page 26.

SALAMONIE (*Cook, 1946*) Each \$7.00

Exquisite light pink blend, richly yet delicately colored, combining the best features of its parents, Majenica and Pink Reflection. A self in garden effect, the flowers holding their color well in any weather. Standards light pinkish cinnamon; falls light Congo-pink; flowers 5 inches in diameter. A strong grower and free bloomer. HM AIS, 1946.

SAN ANTONE (*Kleinsorge, 1947*) Each \$6.00

Illustrated on page 42. A deep tan or sand-brown self, imposing in size and manner of growth, with extra broad falls and beautiful form. The immense buds unfold into huge flowers perfectly spaced, many to the stem. Just enough ruffling to lend grace. HM AIS, 1948.

SHARKSKIN (*Douglas, 1942*) Each \$1.50

A silky white Iris of near perfection in all details. Chosen by some judges as the very finest white of all, it has large size, heavy texture and purity of color to commend it. Inside the throat there is a glistening yellow flush. 44 inches tall. HM AIS, 1943; AM, 1946.

SHARON KAY (*DeForest, 1946*) Each \$3.00

An extraordinary "pinky" Iris of great size and delectable soft coloring, most unusual in the oval shape of the great flowers and in their bright orchid-like shade. Style arms are white tinted lilac and the beard is white tipped orange inside the throat. Magnificent as a clump. Height 38 inches.

SHOW GIRL (*Nelson, 1945*) Each \$1.50

A blush-rose blend from *Rameses* crossed with *Prairie Sunset*. Standards and falls the same shade of rose-pink but the heavy beard and haft are intense orange. Tall and floriferous.

SIERRA BLUE (*Essig, 1932*) Each 35c; 3 for 90c

A soft, clean, enamel-like blue. It is of tall and stately habit, sometimes reaching over 5 feet, with many buds to the stalk. Deeper in tone than *Shining Waters* and more hardy. In 1935 it won the Dykes Medal and is a consistent flower show winner.



The Admiral



Solid Mahogany



Indiana Night

SIERRA SNOW (*Kleinsorge, 1939*) Each 50c; 3 for \$1.25

A hardy white of pure, clean color; very attractive spreading form, and with wavy edges on the falls. Over 40 inches tall, widely branched.

SKY RANGER (*Hall, 1948*) Each \$12.00

Very tall—up to 54 inches—this stately and heavily ruffled medium blue dominates the Iris garden. The three-way branched stems open one flower each at a time, excellently spaced. The flowers are large, of very attractive form and good substance. It is so strong and vigorous that it has held up in storms when shorter and smaller varieties have gone down. HM AIS, 1949.

SNOQUALMIE (*Brehm, 1938*) Each 50c; 3 for \$1.25

A solid deep cream; even in tone, large in size and of leathery texture. Creamy Irises tie into the garden picture well and are admirably used with the reds and Variegatas as well as with the blues and purples. This is one of the best, hardy and free blooming.

SNOW CARNIVAL (*Graves, 1942*) Each \$2.00

A very large pure white with the ruffled finish of wind-blown snow drifts. Fluted standards and wide flaring falls ruffled at the edges. Heavy texture and all other good qualities combine to make this a top-notch white. HM AIS, 1942; AM, 1944.

SNOW FLURRY (*Rees, 1939*) Each \$1.25; 3 for \$3.50

Standards pure icy white, beautifully ruffled. Falls big, broad and pure white. They are waved and crimped at the edges, semi-flaring and abundantly produced on stems reaching 4 feet. Early and long lasting. Note the color plate on page 40.



San Antone

SNOWKING (*H. Sass, 1935*) Each 35c; 3 for 90c

Regal in bearing, with broadly flaring great white blossoms lit with gold in the throat. Heavy of substance, bold and strong in growing habit. HM AIS, 1936; AM, 1937.

SOLID MAHOGANY (*J. Sass, 1944*) Each \$3.00

This grand new red is one of the finest dark Irises of recent years. Beautifully formed, the color is aptly described by the name. No haft venation and a deep bronze-gold beard accent the richness of the plushlike falls. Height 3 feet. HM AIS, 1944; AM, 1947. Shown in color on page 41.

SOUTHERN SNOW (*Beck, 1947*) Each \$2.50

A new white Iris originated in Chattanooga, Tenn., and which fills every qualification for an ideal white. Quite early, the standards and falls are both full and broad, very heavy in texture, and as white as purity itself. The heavy beard is yellow. Increases very fast and flowers abundantly. 3 feet.

SPANISH PEAKS (*Loomis, 1947*)

Each \$12.50

One of the really great new Irises of the day, from the hybridizer who gave to the world the famous Elmohr. Spanish Peaks may prove to be the supreme white of all—a pure clean flower of immense proportions, no yellow on the haft or in the throat. It has everything, including giant size, graceful form, tall stems and perfect branching. HM AIS, 1948.

SPINDRIFT (*Loomis, 1944*)

Each \$2.00

Translucent, delicate seashell or coral-pink, with fiery tangerine beard to accentuate the color. This Iris achieved wide acclaim when shown as a seedling under the number TQ-70. Well branched, with stiff, willowy stems. HM AIS, 1945.



Opal Cloud

SPUN GOLD (*Glutzbeck, 1940*)

Each \$1.00; 3 for \$2.50

Perhaps the most famous yellow Iris ever introduced. It has all of the desired qualities of size, good branching, tall stems and rich solid yellow color. Eagerly sought after because of its fine record; stock has remained scarce. HM AIS, 1939; AM, 1942; Dykes Medal, 1944. See page 28.

STARDOM (*Hall, 1941*)

Each 50c; 3 for \$1.25

Termed onion-skin-pink by the color chart, this fine Iris is not really pink at all, but rather a smooth blend of coppery pink and apricot-buff. It has also been called salmon-rose. Beard is tangerine or brilliant orange. With its large blooms and luscious color it is certain to please you. HM AIS, 1940; AM, 1943.

STORM KING (*Nicholls, 1940*)

Each \$1.00; 3 for \$2.00

The king of the black Irises. Although a somewhat slow increaser, its nearly black, silky blooms are unmatched by any other variety we have seen. Immense blooms, wide flaring falls with no haft markings. Always scarce. HM AIS, 1941.

SUKEY OF SALEM (*Nesmith, 1946*)

Each \$4.00

A blended self of ochre-red and rose with a brown flush on upper part of the falls. Not a dull Iris for it is brimming with bright blended colors so cleverly intermingled it is difficult to describe. Broad petaled, flaring, over 3 feet in height. HM AIS, 1946.

SULTAN'S ROBE (*Salbach, 1945*)

Each \$3.00

This new Iris comes to us with a flattering recommendation. Something different in the way of Oriental coloring—standards Van Dyke red to deep old rose; falls the same with golden overlay, especially on the upper half. There is a dash of violet-blue in the center of each fall. 36 inches tall. HM AIS, 1946.

SUNSET BLAZE (*Kleinsorge, 1948*)

Each \$10.00

A tall and huge golden flame-salmon blend, almost a red, but with so much of the gold influence in it that it is not really a red Iris. You have seen the sun look much like this just before it sinks over the horizon. Both standards and falls are extra large and the haft and beard are bright golden yellow. A most impressive flower, blooming very early on widely branched stalks reaching 42 inches. Winner of the President's cup at the AIS convention in 1949. HM AIS, 1949.

SUZETTE (*Knowlton, 1945*)

Each \$6.00

A creamy yellow plicata with edgings of maroon on the standards and upper portion of the falls. Style arms are sort of rose-brown. A bit like Patrice in general effect but more yellow in garden effect. Large in size, a good grower, 40 inches in height. HM AIS, 1945.

SYLVIA MURRAY (*Norton, 1944*)

Each \$2.25

This new blue is derived from Great Lakes crossed with Shining Waters, lighter in color than either of the parents and with the silvery smoothness of pale blue silk. Enormous flowers, 40-inch stems, altogether a grand blue Iris. HM AIS, 1946; AM, 1949.

THE ADMIRAL (*Hall, 1941*)

Each \$1.00; 3 for \$2.50

An intense blue, deeper than medium blue, but not really a dark shade. The form, finish and substance are outstanding. Withstands either sun, wind or rain equally well, lasts long in bloom and makes a wonderful garden clump. Bluish beard lends depth to the color. HM AIS, 1940; AM, 1944. Shown in color on page 41.



Vice-Regal



GARDEN OF
STEDMAN BUTTRICK,
Concord, New Hampshire

CASSEBEER PHOTO from AMERICAN
IRIS SOCIETY'S NEW BOOK

TALLY-HO (*Hall, 1949*) Each \$12.00

The upper part of the falls is close to the deep coloring seen in bright fuchsia colored Orchids. The domed standards and lower part of the falls are lighter. This is something new, pleasing and different! The 32-inch stems are stout but a little closely branched for such large flowers. It is a wonderful parent—when crossed with clear flamingo-pinks it throws orchid-pinks, golden apricots, and some burgundy shades. It is one of the parents of Heritage, Pink Sensation and others scheduled for introduction.

THE CAPITOL (*Maxwell-Norton, 1945*) Each \$2.25

Combination of gleaming cream-white standards and falls with the most brilliant flame-orange beard and haft. Texture of the petals is Magnolia-like, beautifully formed, and the "house afire" beard lies on the falls like a gorgeous caterpillar. Tall growing and splendidly branched. HM AIS, 1946. Picture on page 16.

THE RED DOUGLAS (*J. Sass, 1937*) Ea. 75c; 3 for \$2.00

Simply colossal in size, as smooth and heavy as a piece of richest plush. It is deep rosy wine-red, solid at the haft, with a brownish cast near the center; beard rich orange. Not the reddest Iris but the coloring is gorgeously deep and intense. Dykes Medal, 1941.

THREE CHEERS (*Cook, 1945*) Each \$4.00

An amazingly brilliant bicolor similar to Amigo in pattern, but tall—42 inches—and richer and bolder in contrast. Standards blue-white; falls semi-flaring with narrow border like the standards. A Wabash seedling. HM AIS, 1946.

THREE OAKS (*Whiting, 1943*) Each \$2.50

This massive rose-pink blend opened the eyes of all the judges last season. Huge in size, beautifully blended tones of rose-pink and copper, and on very tall stems, it was one of the sensations of our garden. Lasts over an extra long period. Height 40 inches. HM AIS, 1945; AM, 1949.

TIFFANJA (*DeForest, 1942*) Each \$1.00; 3 for \$2.50

A new and unique plicata, having good form and thick substance. Smooth and clean cut; standards colonial buff; falls creamy white, definitely bordered buff, brushed at the haft and speckled around the border with light brown. This is a big flower, 42 inches tall. HM AIS, 1944; AM, 1946. Shown in color on page 26.

TIFFANY (*H. Sass, 1938*) Each 50c; 3 for \$1.25

Soft but decidedly yellow in color, with abundant stitching of bronzy pinkish violet. A gracefully frilled flower of full proportions; very large, vigorous growing, reasonably tall. About the best of the low-priced yellow plicatas and will give any of them a run for their money. HM AIS, 1939; AM, 1943. Shown on page 35.

TOBACCO ROAD (*Kleinsorge, 1942*) Each \$3.00

When this Iris first opened in Dr. Kleinsorge's garden, it was so different, so remarkable in both color and form, that we lost all interest in the many other splendid seedlings in the same garden. Tobacco Road is a golden tobacco-brown self. Standards are upright and almost closed, with heavy midribs. The falls are broad, very wide at the haft and held stiffly horizontal. Height 32 to 36 inches, very good branching. HM AIS, 1944; AM, 1946.

TREASURE ISLAND (*Kleinsorge, 1937*)

Each 50c; 3 for \$1.25

A truly gigantic flower of bright clear yellow, slightly lighter in the center of the falls. Tall stems, a fast increaser and easy grower. We have sold more rhizomes of Treasure Island than of any Iris we have ever introduced. You will not be disappointed in this splendid yellow. AM AIS, 1945.

TREVA (*DeForest, 1945*) Each \$3.00

A new glistening golden apricot self. With very wide standards and falls, and flaring form, it has that unusual quality of frostiness which distinguishes Gloriele. This one, however, has what might be termed golden frost! HM AIS, 1946.

TWILIGHT SKY (*Fay, 1949*) Each \$10.00

A pink of exceptional form and substance with pink buds and red beard. Parentage is Pink Cameo x Floradora. Mr. Fay considers this the best out of hundreds of seedlings raised for clear pinks. It is of lovely form and tailored appearance, a soft clean clear pink with red tinged beard. 35 inches tall.

VATICAN PURPLE (*Whiting, 1943*) Each \$3.00

Of bold stature and splendid form, this is one of the most striking newcomers in an old color class that welcomes such improvements. Deep but bright blue-purple, silky in finish but heavy in texture, without haft markings. It has wide-spreading falls and 3-foot stems. A good picture of it on page 17. HM AIS, 1943.

VICE-REGAL (*Miles, 1946*) Each \$2.00

Here is a brand new Iris from Canada, one of the most richly colored seedlings we have ever grown. The standards and falls are almost identical in color, but the velvet of the latter makes them appear slightly deeper. Scarcely any haft marking—a supreme shade of glowing bronzy red-purple with bronze beard. 33 inches tall. Shown on page 43. HM AIS, 1947.

VIOLET SYMPHONY (*K. Smith, 1940*) Each 75c

Smoothly finished Bradley's violet self, free from venations. Practically without competition in its color class, the standards full and closed, the falls very broad and rounded. Not a deep color but rather a light violet-purple or deep violet-mauve. A near perfect flower, 40 inches tall. HM AIS, 1940; AM, 1943.

VOODOO (*Kleinsorge, 1943*) Each \$6.00

A very dark combination of rich chocolate-brown standards and blackish red-brown falls, the entire flower crimped and ruffled at the edges. The broad falls are held stiffly horizontal and the wide standards appear close together and erect. Average size, medium height. A very rich piece of color and an abundant bloomer. It is a sister seedling of Pretty Quadroon.

WABASH (*Williamson, 1937*) Each 50c; 3 for \$1.25

Pure white standards and rich velvety deep violet falls bordered white—the most striking amoena of all. Very tall, branched above the middle of the stalk with a profusion of large, slightly ruffled blossoms. The color plate on page 35 shows this popular Iris in perfect detail. HM AIS, 1937; AM, 1938. Awarded the Dykes Medal in 1940.

WHITE GODDESS (*Nesmith, 1936*) Each 75c

Large glistening white with domed standards. Both the standards and falls are slightly ruffled, the latter arched and flaring. 40 inches tall, a vigorous grower. HM AIS, 1936.

WINSTON CHURCHILL (*Stevens, 1944*) Each \$7.50

A striking new red Iris. Deep but bright crimson, the standards exhibiting a copper glow while the falls are very dark but gleaming maroon. Heavy gold beard. From New Zealand.

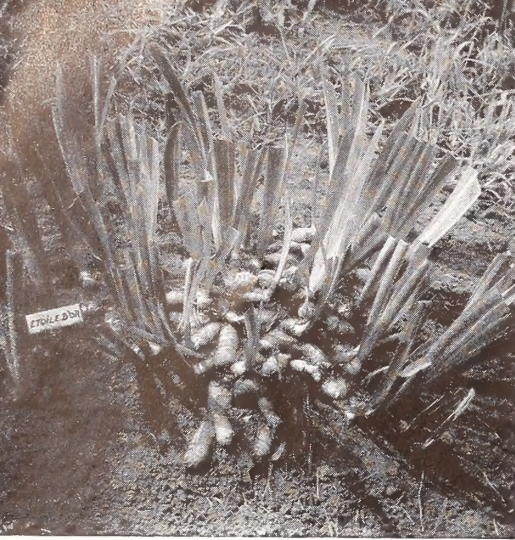
WINTER CARNIVAL (*Schreiner 1941*) Each \$1.00; 3 for \$2.50

A fine hardy white, bred in Minnesota. Widely flaring falls, snow-white in color, the throat heavily tinted gold. Branching is excellent and the stout stems hold the big blooms well aloft. This is surely one of our best whites. HM AIS, 1942. See page 29.

WM. MOHR (*Mohr, 1925*) Each 35c; 3 for 90c

The entire bloom is a self of pale rosy lilac closely netted and veined deep violet, producing a weird, yet very lovely effect. A mammoth flower of medium height, with small foliage. Does better if divided and transplanted at least every other year.





From a single rhizome planted in 1942 this crowded clump was overdue for dividing in 1947. Note rhizomes growing over one another in center of clump.



After being dug, clump was cleaned with stream from hose. Note that healthy, growing rhizomes circle the clump, while those in center have very few white feeding roots.



HOW TO DIVIDE

Healthy, growing rhizomes are separated from old bloomstalks. Some prefer "doubles" as in foreground for replanting. Wash rhizomes thoroughly before replanting.

THE ABOVE SERIES OF PICTURES

is taken from the new book "THE IRIS, AN IDEAL HARDY PERENNIAL," recently published by the American Iris Society. This is as nearly complete as the experts have been able to make it—chapters on the various groups, types and species, every phase of culture, the fine points of Iris breeding, diseases and pests, all about the American Iris Society, Iris judging, photography, uses of Irises in the garden, and so on. 226 pages, well illustrated. Heavy paper binding, \$1.50; permanent cloth binding, \$2.50. Send your order to us and we will ship promptly.

JOIN THE AMERICAN IRIS SOCIETY

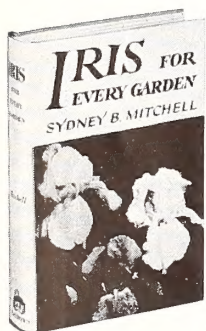
membership in which will bring you four meaty bulletins per year. This is the best way to keep informed on Iris progress, the latest awards, what the experts think. These bulletins are really books themselves, generally containing 100 pages or over per copy. Dues \$3.50 per year and well worth it. Send your remittance to us, we will enter membership for you.

IRIS FOR EVERY GARDEN

By Sidney B. Mitchell

The most up-to-date and complete book on Iris ever written with all basic information for amateurs and for specialists, an authentic discussion of species and varieties all over the world. With this book as a guide you can select Irises to bloom from 3 to 12 months a year, depending on where you live and what you plant—the familiar bearded, the Japanese, Siberian, Louisiana types, or certain rare and fascinating species. Dr.

Mitchell has grown Iris for 50 years, has himself developed new varieties, and shows you the way to special satisfaction with this "finest hardy perennial." 224 pages of text, plus 12 pages of how-to drawings and plans. 25 species and varieties illustrated in full color. \$3.00 per copy. Send orders directly to us.



A FEW CULTURAL TIPS

While it is true that Irises are among the easiest of all plants to grow, anyone who plans to grow even a few Irises should not be content to achieve merely indifferent results. Most Irises will succeed well in any type of soil from almost pure sand to stiff clay. Where one may choose, a medium heavy, fairly well enriched soil—in other words, ordinary good garden soil—is to be preferred. Go easy on fertilizers, especially animal fertilizer; this sometimes promotes lush growth and eventual rot! Bone meal, well worked in, is safe, and good.

Don't plant in deeply shaded situation, and avoid places where roots of large trees or big shrubs rob the soil of plant food and moisture. Be sure drainage is good.

Plant at least two feet apart; after first year, sparse appearance will have vanished. If immediate effect is desired, plant in groups of three of a kind, about a foot apart, the groups at 3-foot intervals.

DISEASES AND PESTS

Although comparatively free from garden enemies, soft rot of the rhizomes or spotting of the foliage sometimes manifests itself. The former, usually the result of poor drainage or an over-wet season, can be controlled by cutting back to sound tissue or replanting. Leaf spot, like the measles, is not fatal. Cut away and burn infected foliage and dust with copper or Bordeaux solution. For Iris borer, or more detailed information on any of these subjects, drop a post card and ask for our 3-page leaflet on "Culture of Bearded Iris." It was included as an insert in last year's catalog, but it will be sent without charge to anyone requesting it.

IRIS BORER

A new product has come to the front in combatting borer. So many people have used it successfully that we are glad to recommend it to our customers. Write to Gray Incorporated 7217 Division St., River Forest, Illinois, for Gray's Iris Borer Eradicator, \$1.50 for a 16-oz. bottle.

KODACHROME SLIDES OF IRIS

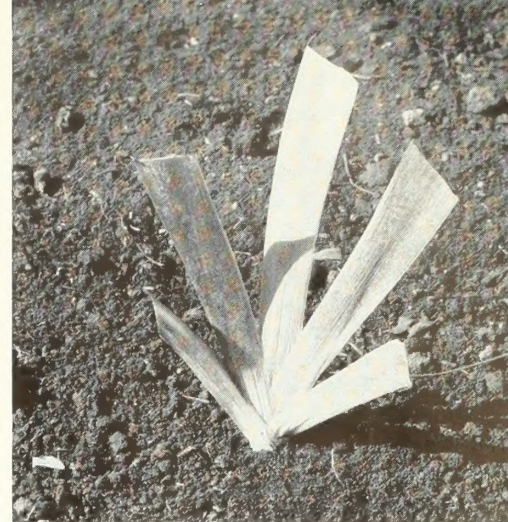
For Garden Clubs and other interested groups, we suggest the following two sources for programs of Iris in color:

The American Iris Society
444 Chestnut St.,
Nashville 10, Tenn.

Dr. Philip G. Corliss,
Somerton, Arizona

Write to either or both for further information and advise the dates desired.

This catalog is free to all customers of record over a 2-year period, otherwise copies may be obtained for 25c and this amount deducted from first order.



AND PLANT AN IRIS

Before planting a new bed of Iris, dig in plant food and cultivate well. When ready to plant, dig two slanting holes, leaving a dividing ridge in the center.

Place rhizome directly over center of ridge and spread feeding roots evenly to each side. By spreading roots to either side, the plant is securely anchored.

Pull dirt in towards plant from either side. By pressing on top of root, proper planting depth may be regulated. Firm with foot and water well.

AMERICAN IRIS SOCIETY 1950 OFFICIAL SYMPOSIUM OF 100 MOST POPULAR IRIS

Varieties in Order
of Numerical Average

| | 1949 Rating | | | | |
|----------------------|----------------|-----------------------|-----|---------------------|-----|
| 1. Ola Kala | 1 | 32. Garden Glory | 37 | 67. Argus Pheasant | 118 |
| 2. Great Lakes | 2 | 33. Casa Morena | 41 | 68. Christabel | 66 |
| 3. Chivalry | 3 | 34. Cherie | 43 | 69. Gloriolle | 58 |
| 4. Helen McGregor | 5 | 35. Rocket | 38 | 70. Cordovan | 138 |
| 5. Blue Rhythm | 6 | 36. Chamois | 50 | 71. Sharkskin | 74 |
| 6. Bryce Canyon | 4 | 37. Grand Canyon | 28 | 72. Red Valor | 70 |
| 7. Master Charles | 10 | 38. Fair Elaine | 36 | 73. Firecracker | 56 |
| 8. Sable | 7 | 39. Katharine Fay | 35 | 74. Captain Wells | 64 |
| 9. Elmohr | 8 | 40. Tobacco Road | 34 | 75. Priscilla | 71 |
| 10. Lady Mohr | 12 | 41. Extravaganza | 46 | 76. Three Oaks | 83 |
| 11. Blue Shimmer | 9 | 42. Black Forest | 39 | 77. Lynn Langford | 78 |
| 12. Wabash | 11 | 43. Moonlight Madonna | 44 | 78. Fantasy | 68 |
| 13. Berkeley Gold | 13 | 44. Violet Symphony | 47 | 79. Spindrift | 61 |
| 14. Azure Skies | 15 | 45. Distance | 53 | 80. Golden Treasure | 67 |
| 15. Snow Flurry | 16 | 46. Goldbeater | 69 | 81. Matterhorn | 52 |
| 16. Amandine | 17 | 47. Spanish Peaks | 59 | 82. Gypsy | 89 |
| 17. Cascade Splendor | 21 | 48. Golden Fleece | 41 | 83. Lake George | 106 |
| 18. New Snow | 26 | 49. Sylvia Murray | 62 | 84. Cloud Castle | 94 |
| 19. Pink Cameo | 22 | 50. Winter Carnival | 55 | 85. Remembrance | 54 |
| 20. Tiffanja | 24 | 51. Treasure Island | 40 | 86. Lord Dongan | 86 |
| 21. Lady Boscawen | 27 | 52. Spun Gold | 42 | 87. White Wedgewood | 73 |
| 22. Solid Mahogany | 29 | 53. Bandmaster | 51 | 88. Daybreak | 65 |
| 23. Prairie Sunset | 20 | 54. China Maid | 49 | 89. Shining Waters | 85 |
| 24. Los Angeles | 19 | 55. Minnie Colquitt | 45 | 90. Missouri | 80 |
| 25. Mulberry Rose | 14 | 56. Deep Velvet | 48 | 91. Junaluska | 82 |
| 26. Amigo | 18 | 57. Desert Song | 88 | 92. Harriet Thoreau | 84 |
| 27. Chantilly | 30 | 58. Lothario | 102 | 93. Mexico | 77 |
| 28. Blue Valley | 33 | 59. Easter Bonnet | 111 | 94. Elsa Sass | 76 |
| 29. Dreamcastle | 32 | 60. Snow Carnival | 72 | 95. Vatican Purple | 75 |
| 30. Ranger | 23 | 61. Cloth of Gold | 104 | 96. Mary Vernon | 97 |
| 31. The Admiral | 25 | 62. Red Douglas | 57 | 97. Sierra Blue | 98 |
| | | 63. Three Cheers | 122 | 98. Ming Yellow | 95 |
| | | 64. City of Lincoln | 60 | 99. Tiffany | 93 |
| | | 65. Arab Chief | 91 | 100. Nightfall | 81 |
| | | 66. Golden Majesty | 63 | | |



CASCADE SPLENDOR

Coolley's
GARDENS
SILVERTON - OREGON